

Samlan Homes Canada

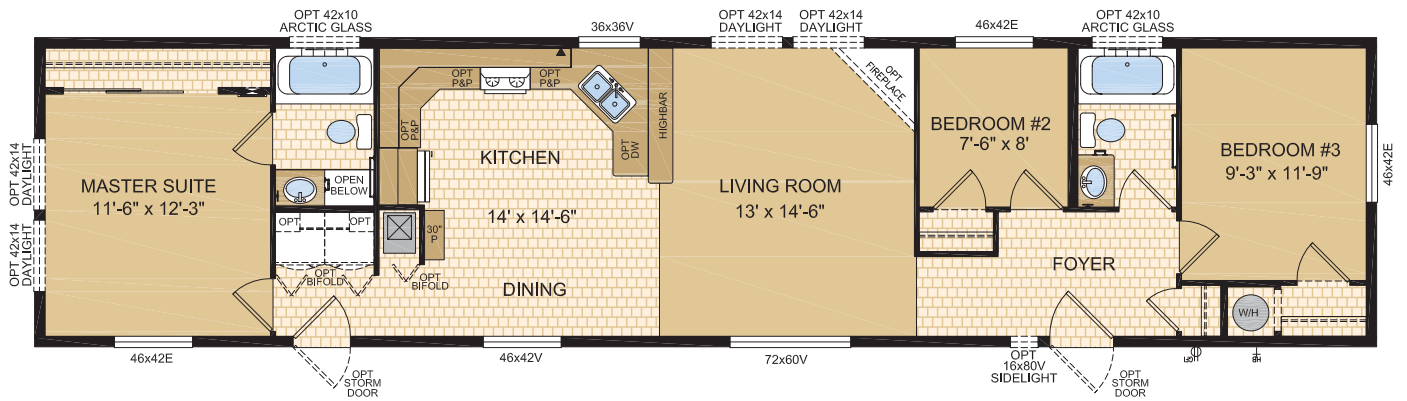
780-219-5555



16200

16' x 68' • 1,088 sq. ft.

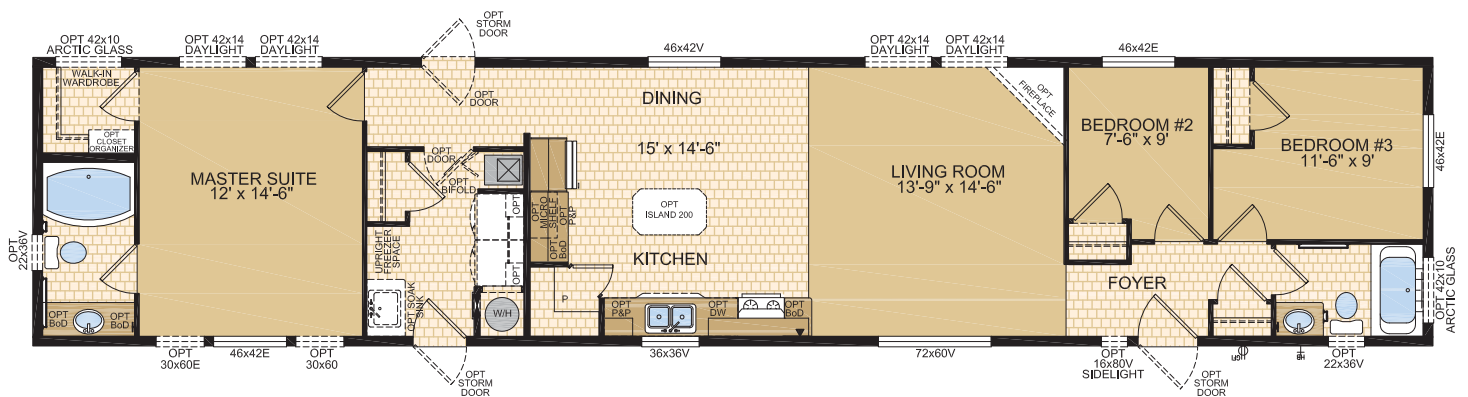
3 Bedrooms, 2 Bathrooms



16201

16' x 76' • 1,216 sq. ft.

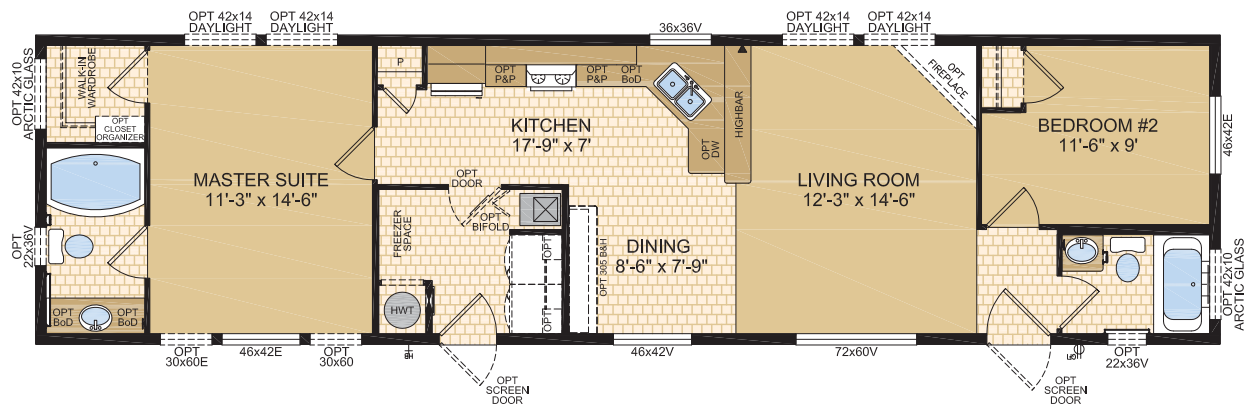
3 Bedrooms, 2 Bathrooms



16202

16' x 60' • 960 sq. ft.

2 Bedrooms, 2 Bathrooms

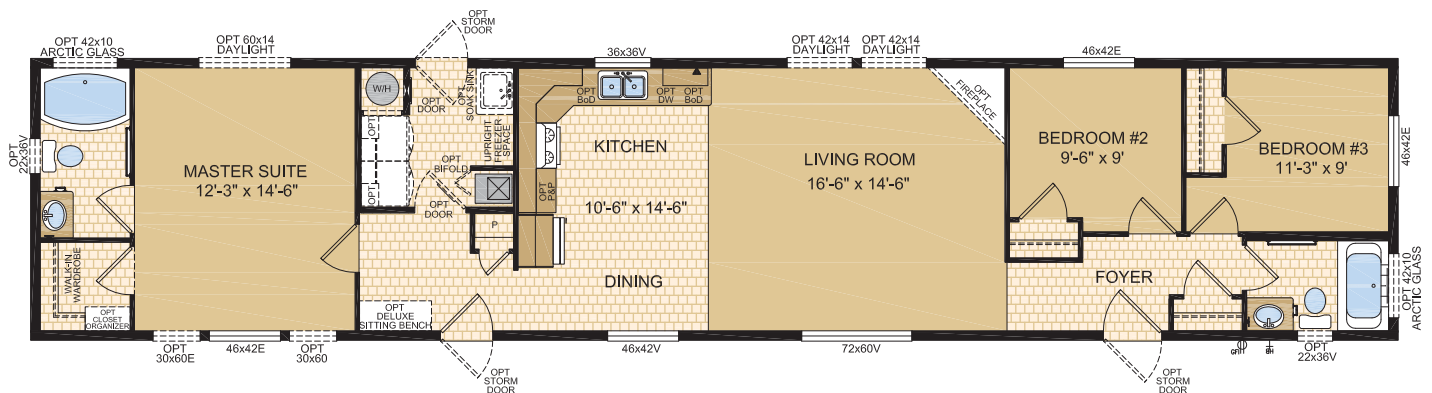


16203

16' x 76' • 1,216 sq. ft.

3 Bedrooms, 2 Bathrooms

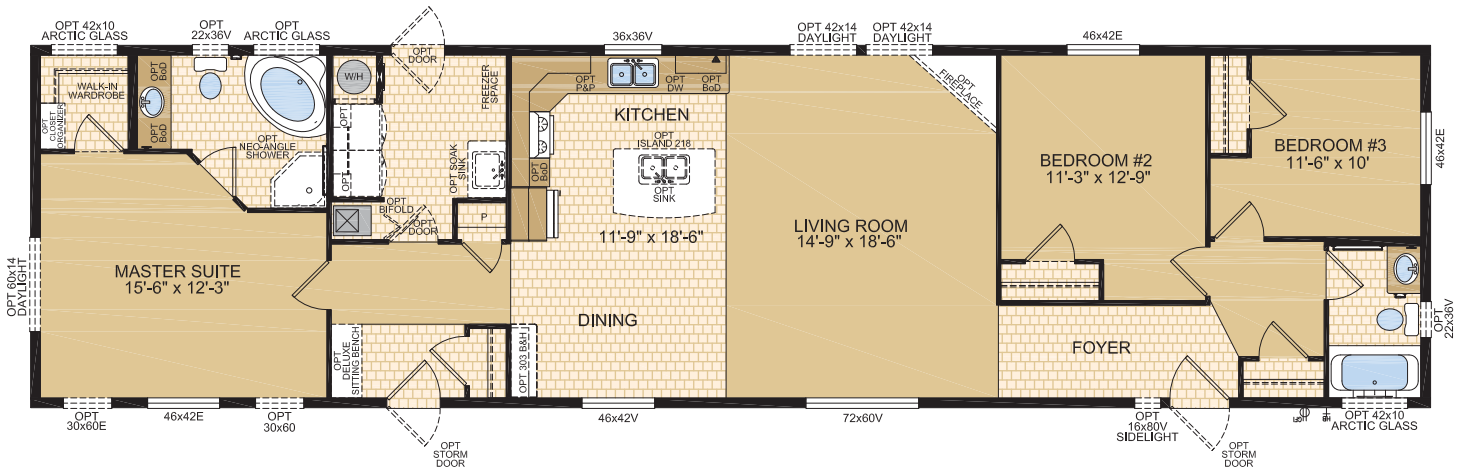
Note: Artist Rendering on front cover



20200

20' x 76' • 1,520 sq. ft.

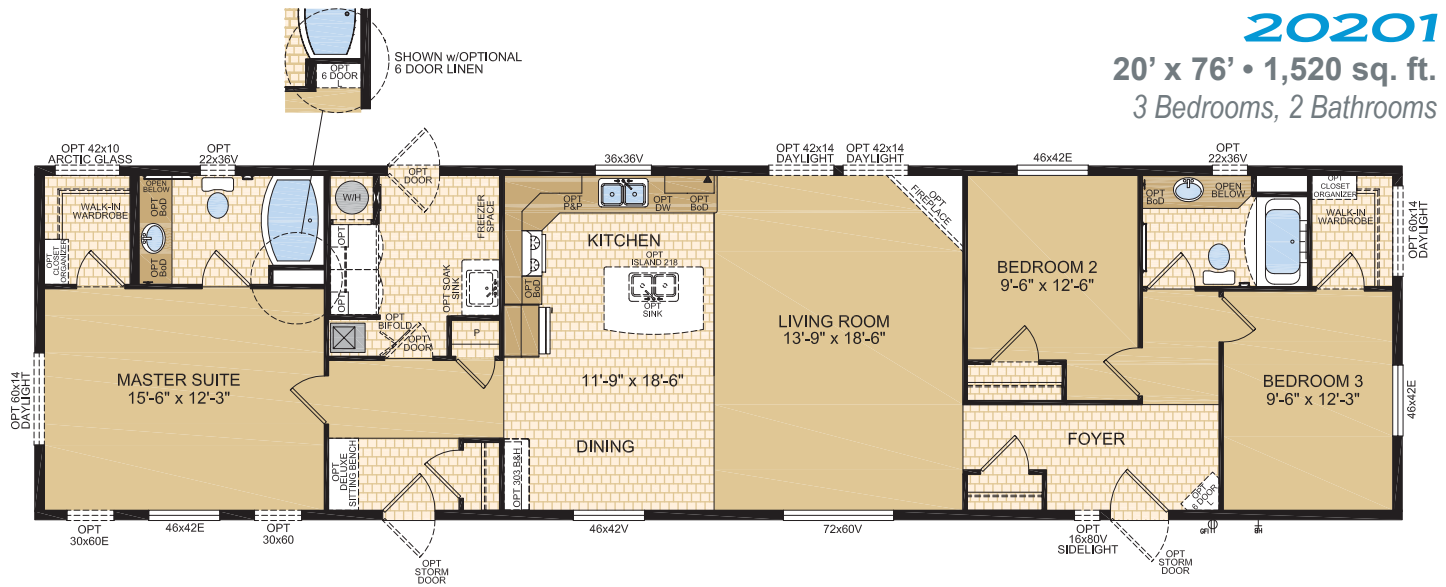
3 Bedrooms, 2 Bathrooms



20201

20' x 76' • 1,520 sq. ft.

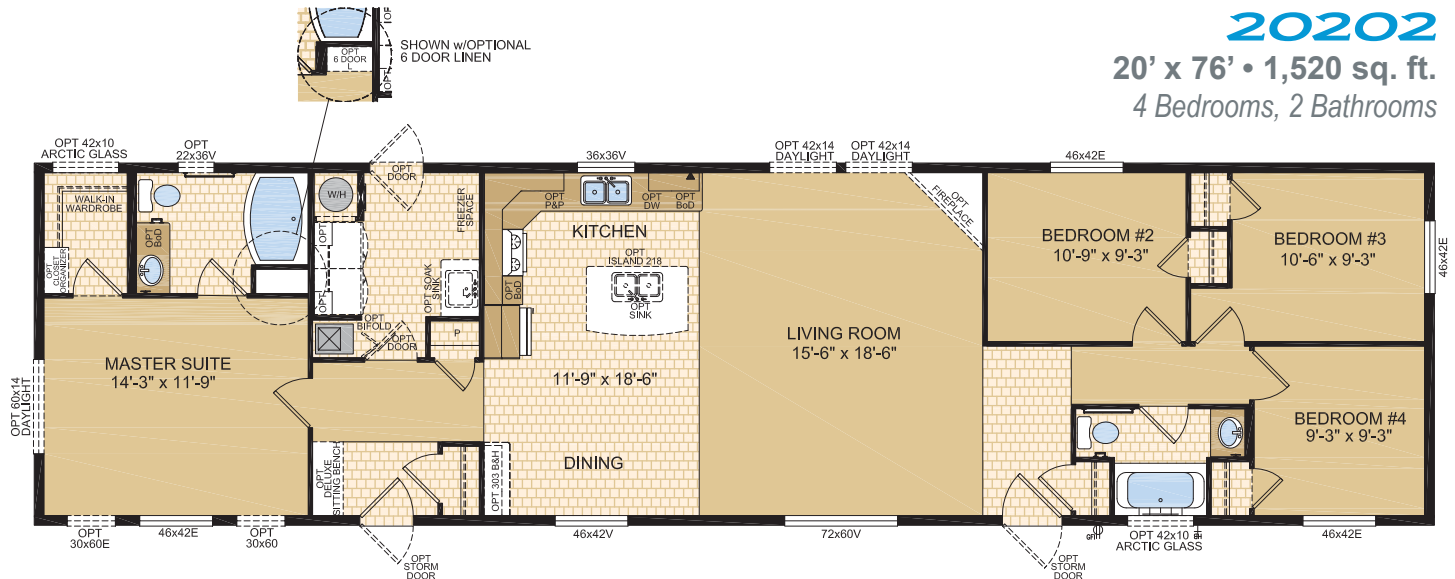
3 Bedrooms, 2 Bathrooms



20202

20' x 76' • 1,520 sq. ft.

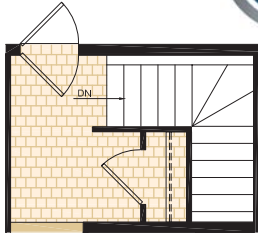
4 Bedrooms, 2 Bathrooms





LEGACY

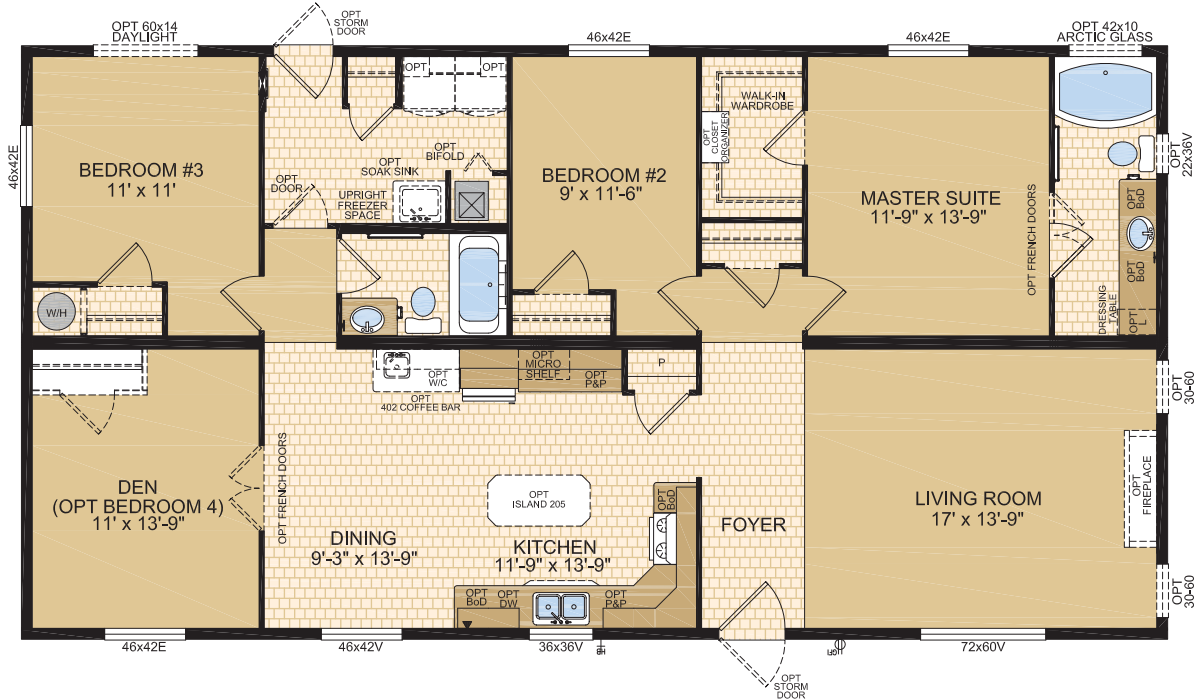
HOME SERIES



OPTIONAL
FOUNDATION

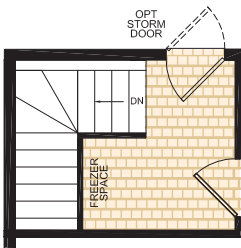
30400

29' x 56' • 1,624 sq. ft.
3 Bedrooms, 2 Bathrooms, Den

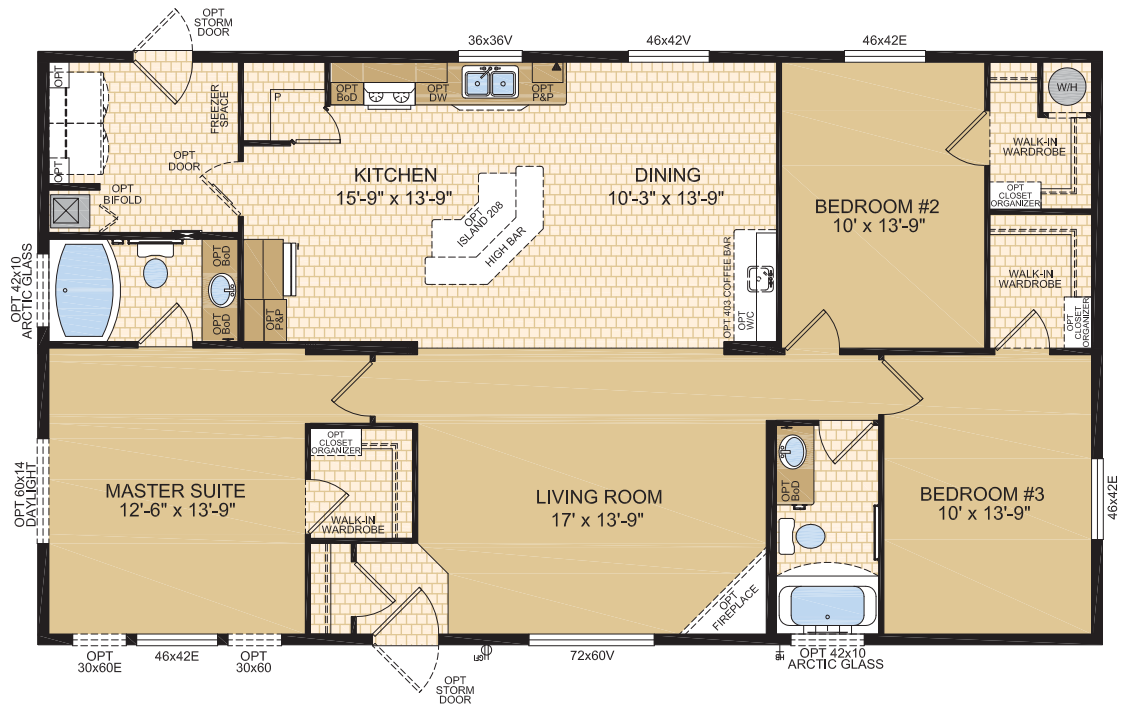


30401

29' x 52' • 1,508 sq. ft.
3 Bedrooms, 2 Bathrooms

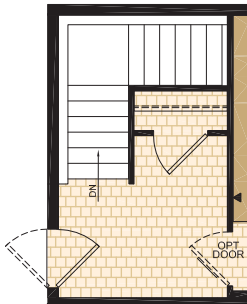
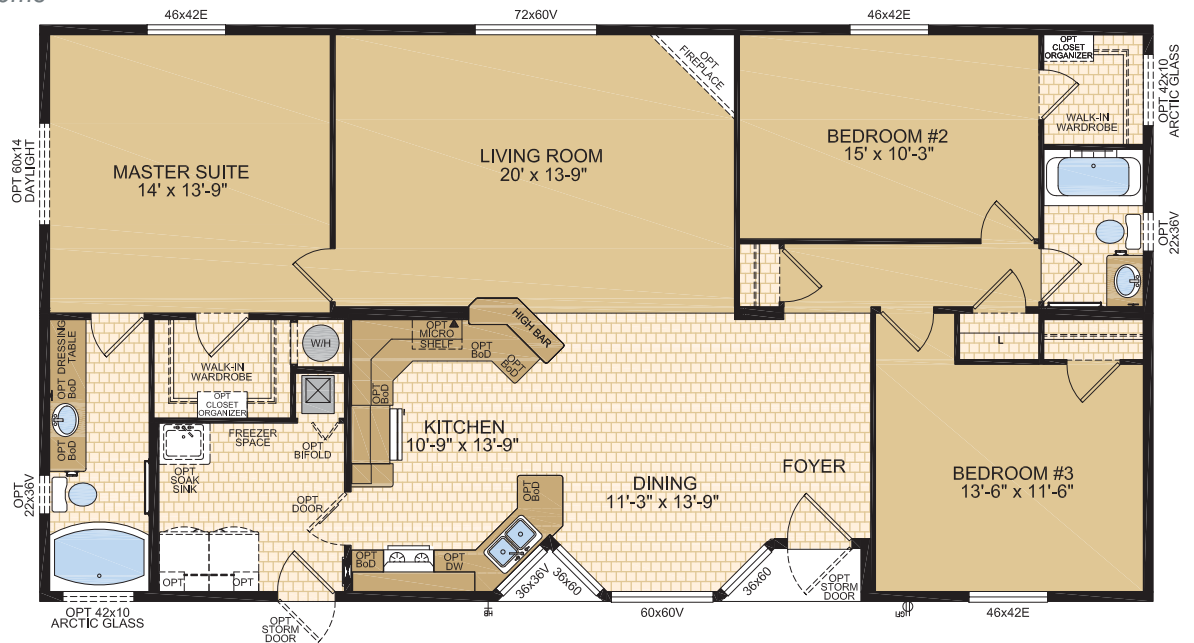
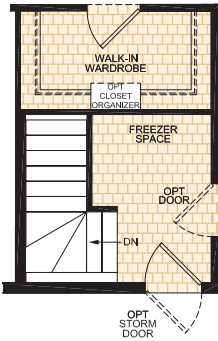


OPTIONAL
FOUNDATION

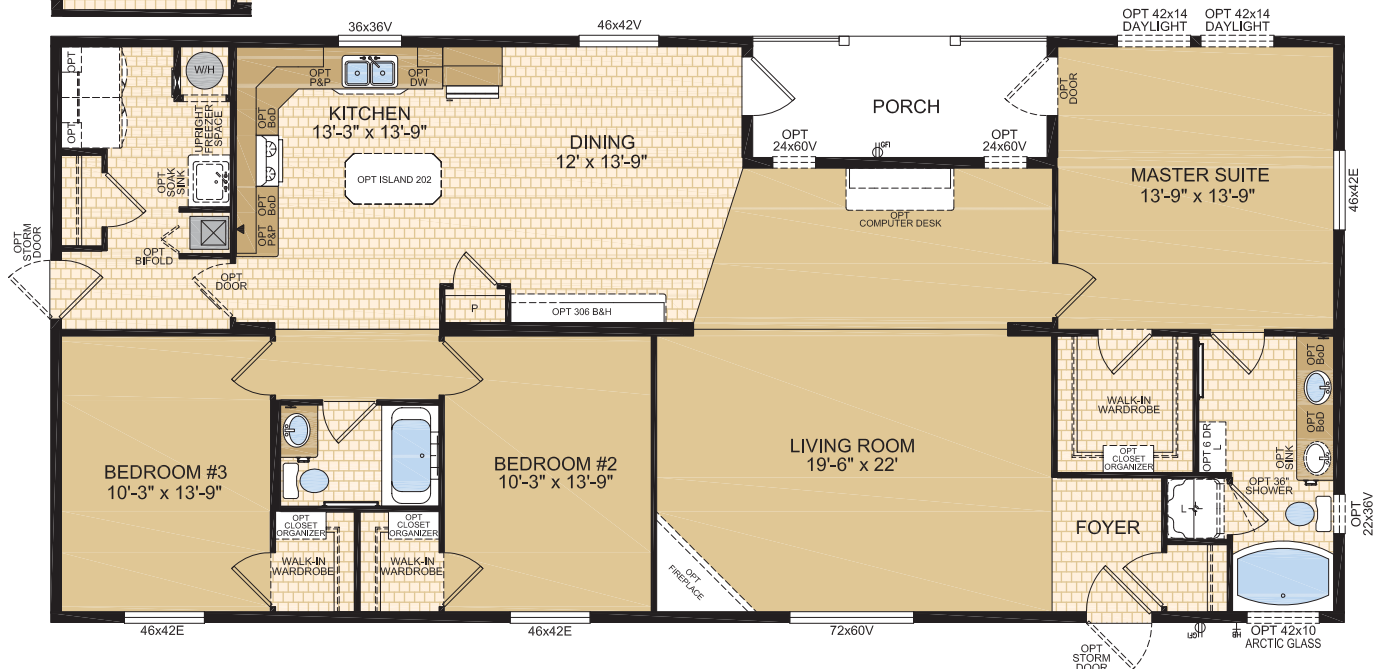




3 Bedrooms, 2 Bathrooms



Note: Artist Rendering on front cover





LEGACY

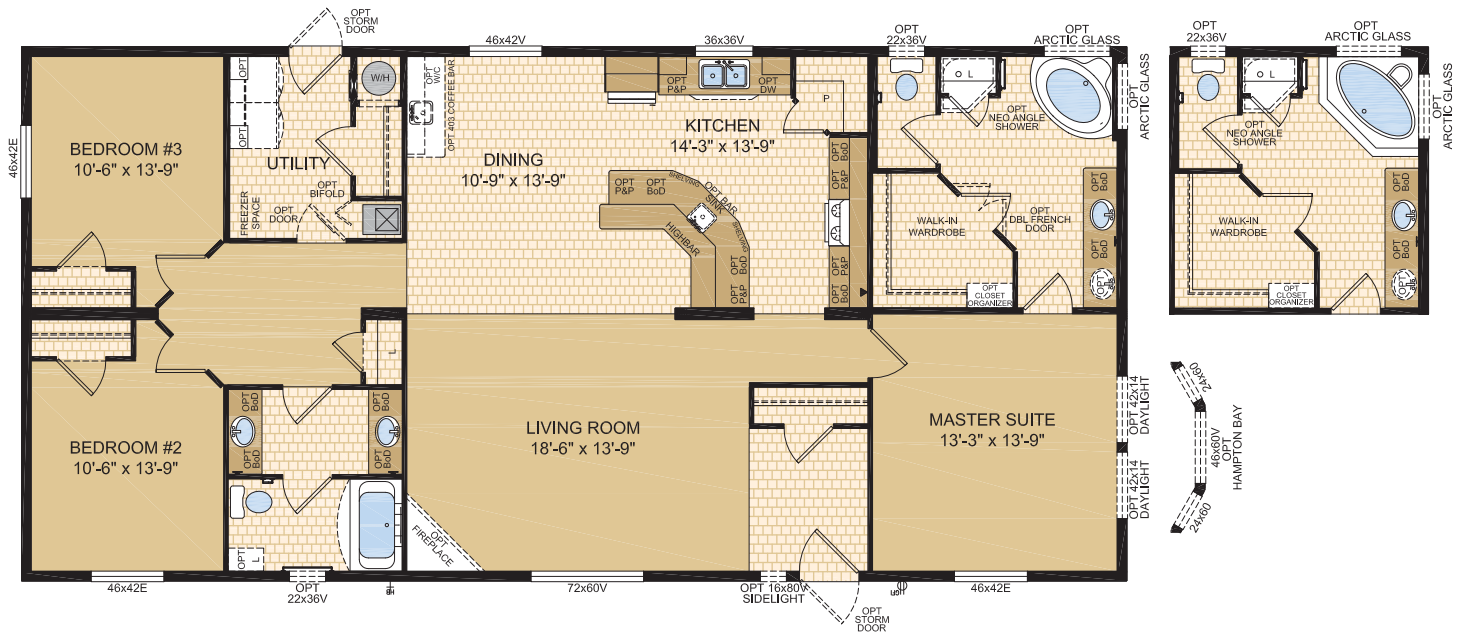
HOME SERIES

OPTIONAL
FOUNDATION

30404

29' x 60' • 1,740 sq. ft.

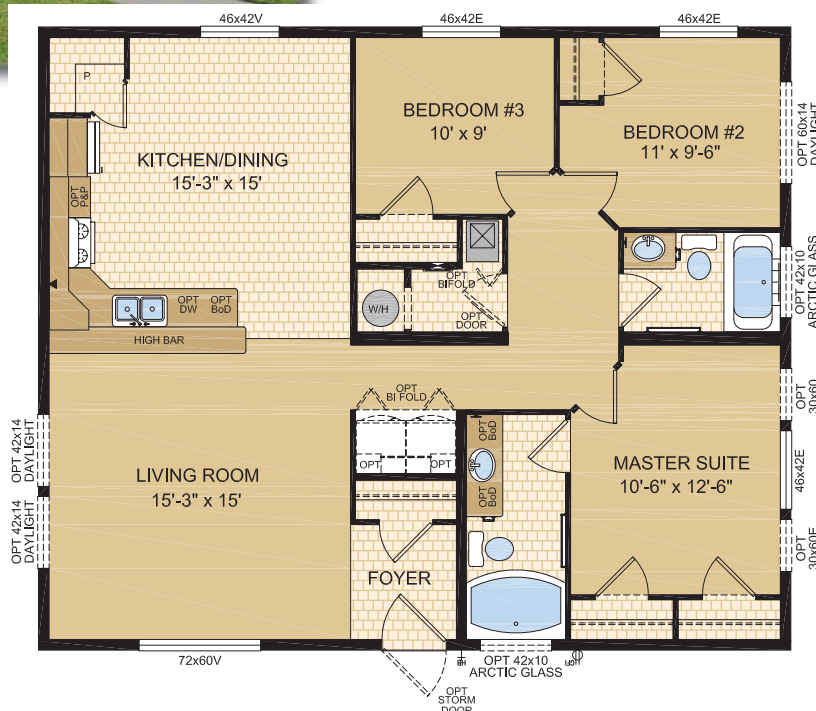
3 Bedrooms, 2 Bathrooms



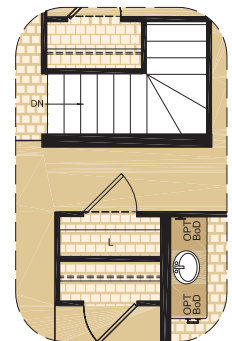
32400Ts

32' x 38' • 1,216 sq. ft.

3 Bedrooms, 2 Bathrooms



OPTIONAL
FOUNDATION



STANDARD FEATURES & SPECIFICATIONS

GENERAL CONSTRUCTION

- 8' Ceilings
- Cathedral ceiling in living, dining area, and kitchen
- Maintenance free vinyl lap siding and metal fascia
- Architectural asphalt shingle roof (*limited lifetime warranty*)
- 7/16" roof sheathing
- Engineered full 4-12 pitch roof trusses
- 12" sides, 18" front vented eaves for 16' and 20' Wides
(*Does not include rear*)
- 18" extended eaves for Multi-Sections (*all 4 sides*)
- Textured (*primed*) gyproc ceilings
- Exterior walls built 2"x6" and strengthened with 3/8" OSB sheathing on inside and outside of wall
- 5/8" T & G OSB Floor Decking glued and screwed
- Heavy tubular steel frame
- 2"x10" Floor joists @ 16" o.c.
- Decorative insulated entry doors with dead bolt and peephole (*36" front door; storm doors opt.*)
- Coach lights at all exterior entrances
- Residential maintenance free Low E Argon Filled (R-5) PVC vinyl windows
- PVC windows, screens and security locks
- Exterior GFI electrical outlet and frost-free water tap
- Insulation meets zone requirements as per 9.36 Energy Code
- All others: Floors R-20, Walls R-20 & Ceiling R-40 (*min*)

TASTEFUL INTERIORS

- Plush Saxony carpet in Living Room, all bedrooms, and hallways in 20' wides (*lino in hallways of 16' wides*)
- Quality cushioned linoleum flooring all other areas
- Pre-finished interior doors in Crystal White colour
- 2" white faux wood blinds (*inset in window*) in all areas except bathrooms

BRIGHT, BEAUTIFUL KITCHENS

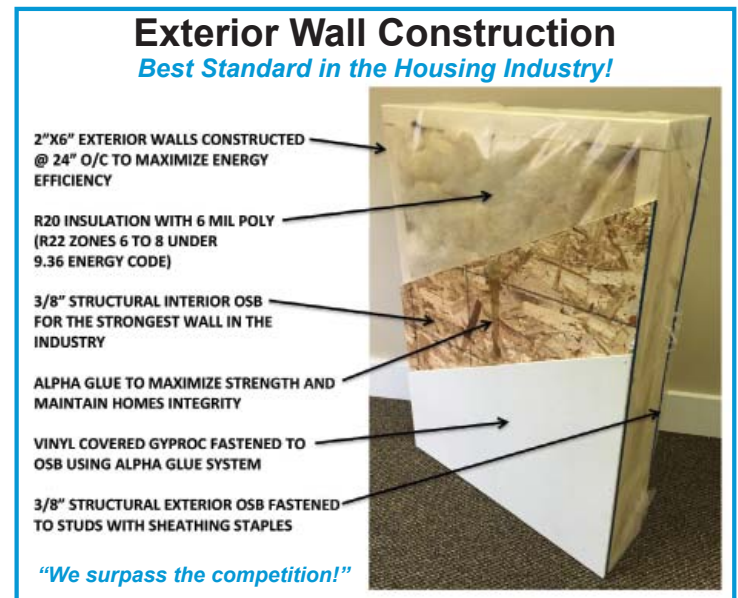
- Deluxe tile backsplash
- Window over kitchen sink (*most models*)
- Deluxe 30" electric range
- Exterior vented range hood with light
- 19 cubic foot, 2-door, frost free refrigerator
- Double stainless-steel sink
- Spacious pantry (*selected model*)
- Doweled, full modular cabinetry w/crown moulding
- Three distinctive colors of cabinet doors to choose from with matching moulding & trim colour

SPACIOUS BATHS

- One-piece quality fiberglass tub and shower units
- Oval tub in ensuite (*excl model 16200*)
- Single lever faucet on tub/shower unit
- Expansive vanity mirrors with theatrical lights
- GFI receptacle
- Power bath fans
- Deluxe Tile Backsplash
- Curved shower rod in all tubs

UTILITY SERVICES

- 100 amp electrical panel
- Smoke detectors in bedrooms
- Arc Fault protection in public areas of home
- High efficiency (*95.1+AFUE*) gas furnace with condensation pump
- 39 Imp. (*45US*) gallon electric water heater
- Primary exhaust fan c/w dehumidistat & switch
- CO/Smoke Detector(s) c/w battery backup
- GFI protected receptacle for heat tape
- Wired, plumbed and vented for washer and dryer
- Communication outlet in kitchen
- Shelf above washer and dryer
- Dedicated Receptacle "freezer area"



Samlan Homes Canada

Call: 780-219-5555