

Samlan Homes Canada

780-219-5555



Samlan Homes canada

STANDARD FEATURES & SPECIFICATIONS

GENERAL CONSTRUCTION

- Built to the A-277 code zone 7A
- 8' Flat Ceilings
- Maintenance free vinyl lap siding and metal fascia
- Architectural asphalt shingle roof (limited lifetime warranty)
- 7/16" roof sheathing
- Engineered full 4/12 pitch roof trusses
- 18" front vented eaves (no side or rear eaves)
- Textured (primed) gyproc ceilings
- Exterior walls built 2"x6" and strengthened with 3/8" OSB sheathing on inside and outside of wall
- Covered gyproc throughout
- 19/32" T & G OSB Floor Decking glued and screwed
- Heavy tubular steel frame
- 2"x10" Floor joists @ 16" o.c. (16' & 20' wides)
- Decorative insulated 32" entry doors with dead bolt and peephole
- Coach lights at all exterior entrances
- Screen doors at rear exterior door
- Residential 1.6U-value, maintenance free Low E Argon Filled (R-5) PVC vinyl windows
- PVC windows, screens and security locks
- Exterior GFI electrical outlet
- Insulation meets zone requirements as per zone 7A/7B/8 of the 9.36 Energy Code: Floors R-48, Walls R-22 & Ceiling R-40 (min)

TASTEFUL INTERIORS

- Plush Saxony carpet in Living Room, all bedrooms, and hall ways in 20' wides (lino in hallways of 16' wides)
- Quality cushioned linoleum flooring in all other areas
- Switched receptacles in bedrooms
- Pre-finished interior passage doors in Crystal White colour

BRIGHT, BEAUTIFUL KITCHENS

- Exterior vented range hood with light
- Double stainless steel sink
- Doweled, full modular cabinetry
- Three distinctive colors of cabinet doors to choose from with matching moulding & trim colour
- Window over kitchen sink (most models)
- Peninsula Kitchen (20' wides only)
- Deluxe Tile Backsplash 3 3/4" x 12"

SPACIOUS BATHS

- One-piece quality fiberglass tub and shower units
- Single lever faucet on tub/shower unit
- Expansive vanity mirrors
- GFI receptacle
- Exhaust fan(s)
- Deluxe Tile Backsplash 3 3/4" x 12"

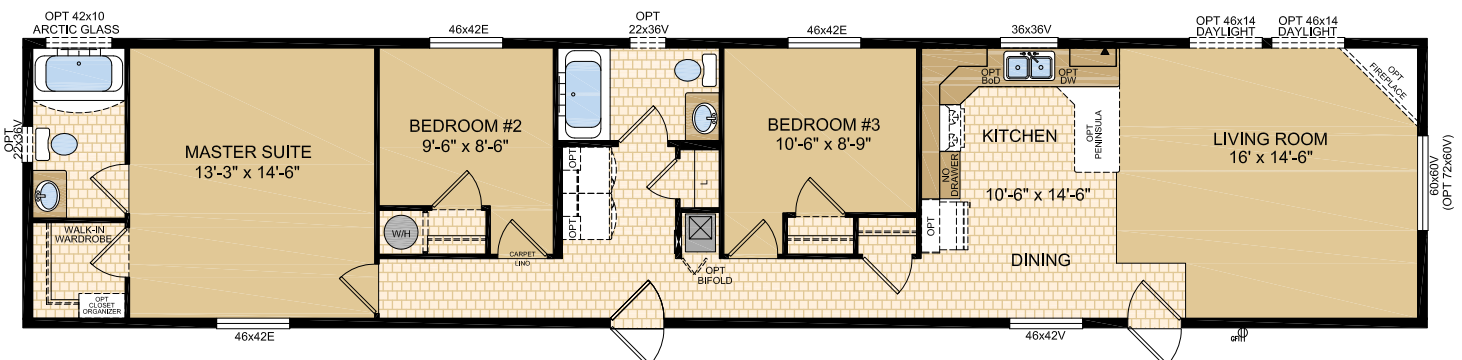
UTILITY SERVICES

- 100 amp electrical panel
- Programmable thermostat
- Upgraded building envelope to meet 0.20 L/M2S
- 3m Insulated water lines on hot & cold sides at W/H
- Smoke detectors in bedrooms
- Arc Fault protection in public areas of home
- High efficiency (95.1+ AFUE) gas furnace with condensation pump
- 39 Imp. (40 US) gallon electric hot water tank 9.36 compliant
- Primary exhaust fan c/w dehumidistat & switch
- CO/Smoke Detector(s) c/w battery backup
- GFI protected receptacle for heat tape
- Wired, plumbed and vented for washer and dryer
- Communication outlet

Jamestown

Model 16401

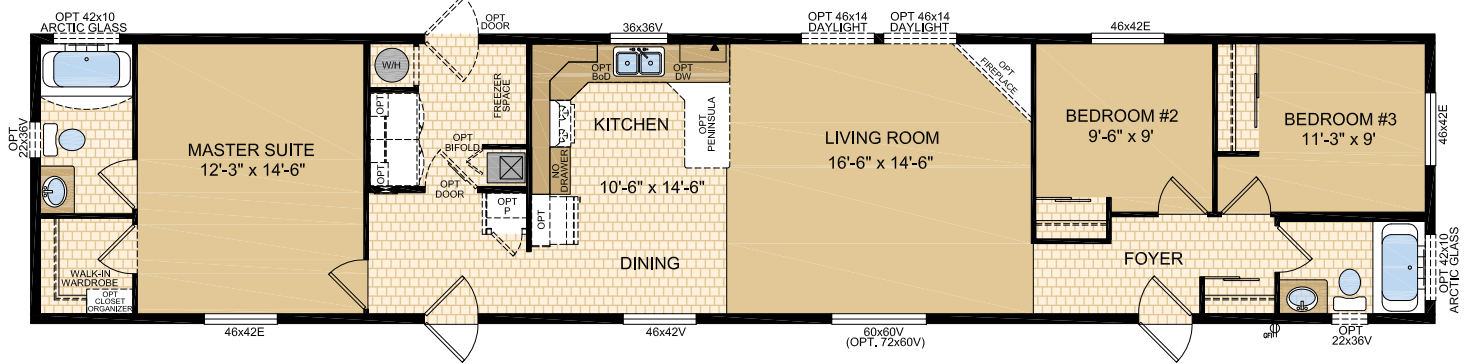
16' x 76' - 1,216 sq.ft.



Kalimore

Model 16405

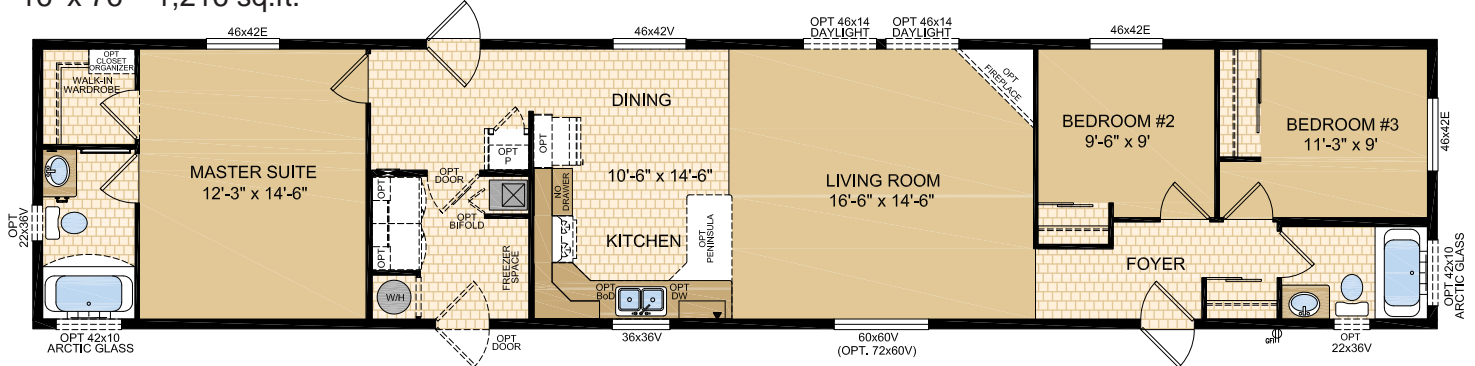
16' x 76' - 1,216 sq.ft. (Note: rendering shown on front cover)



Victoria

Model 16406

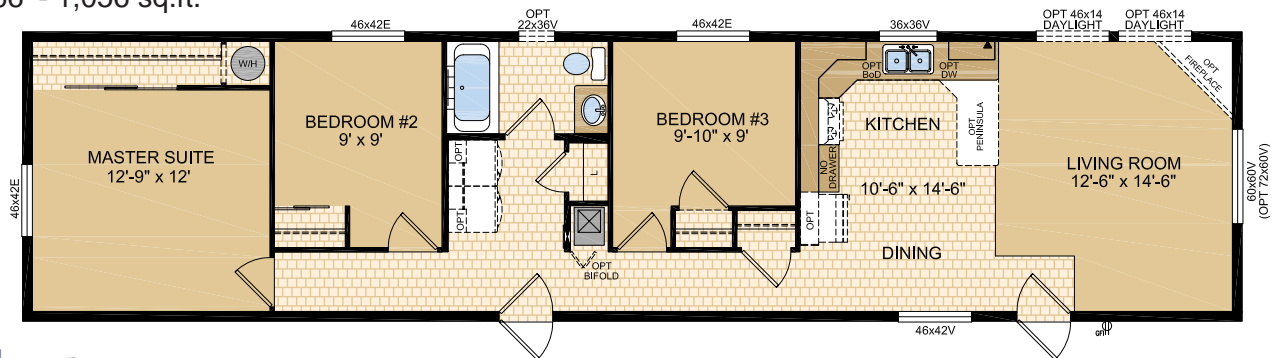
16' x 76' - 1,216 sq.ft.



Inverness

Model 16411

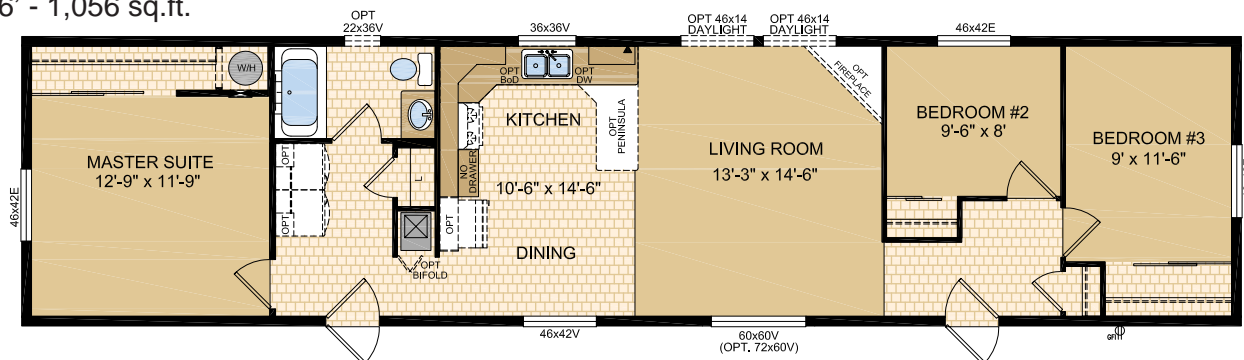
16' x 66' - 1,056 sq.ft.



Jackson

Model 16412

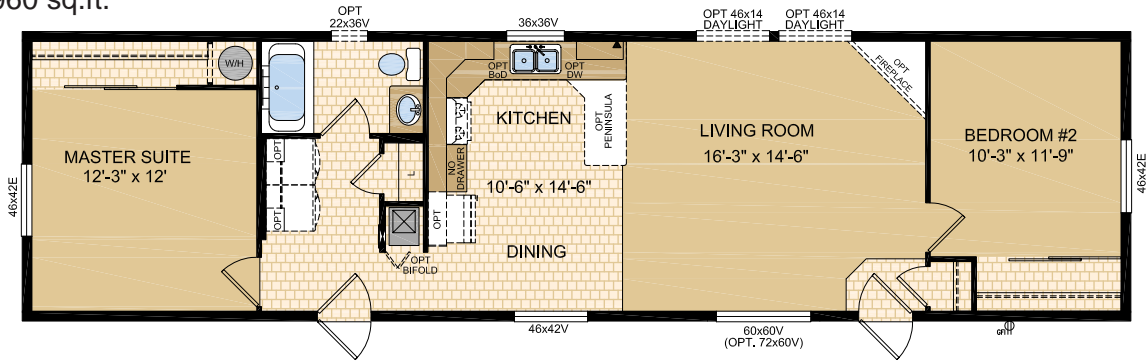
16' x 66' - 1,056 sq.ft.



Kelowna

Model 16422

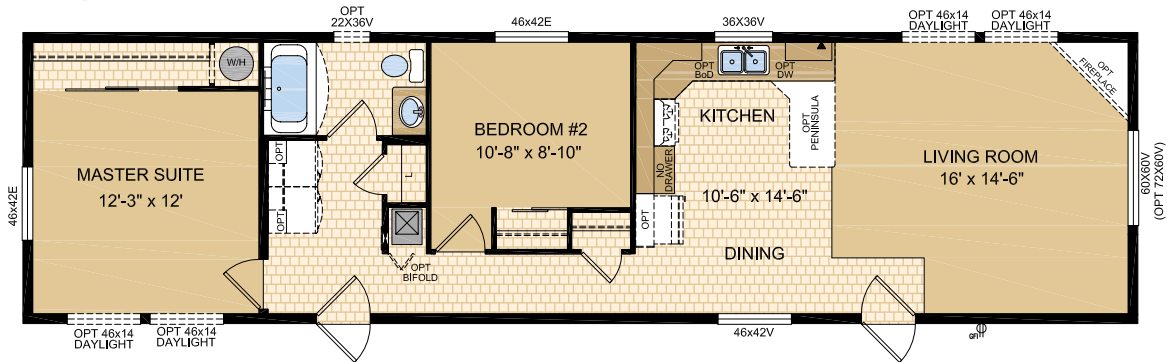
16' x 60' - 960 sq.ft.



Innsbruck

Model 16423

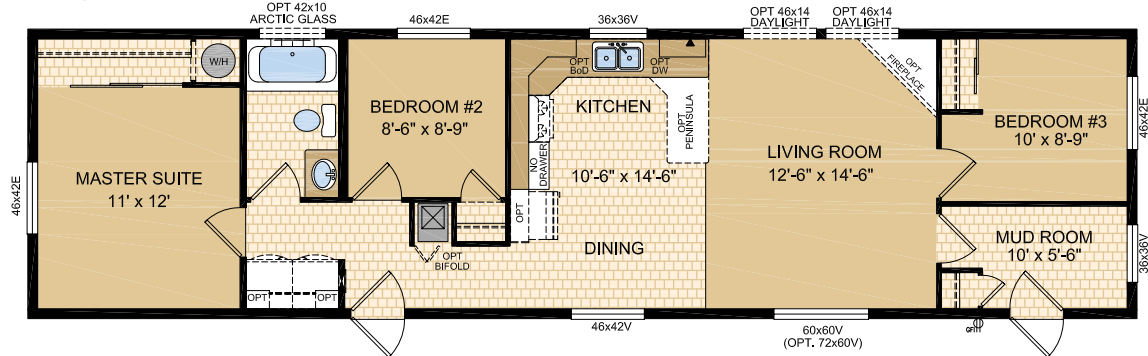
16' x 60' - 960 sq.ft.



Jamaica

Model 16426

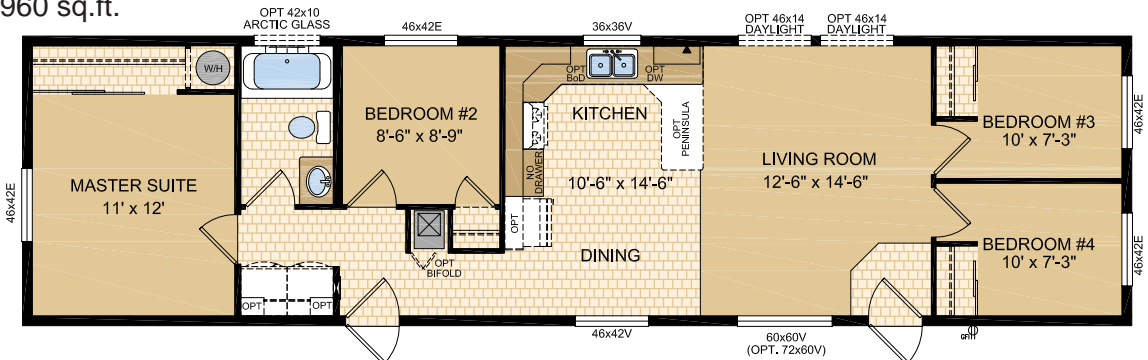
16' x 60' - 960 sq.ft.



Kampala

Model 16427

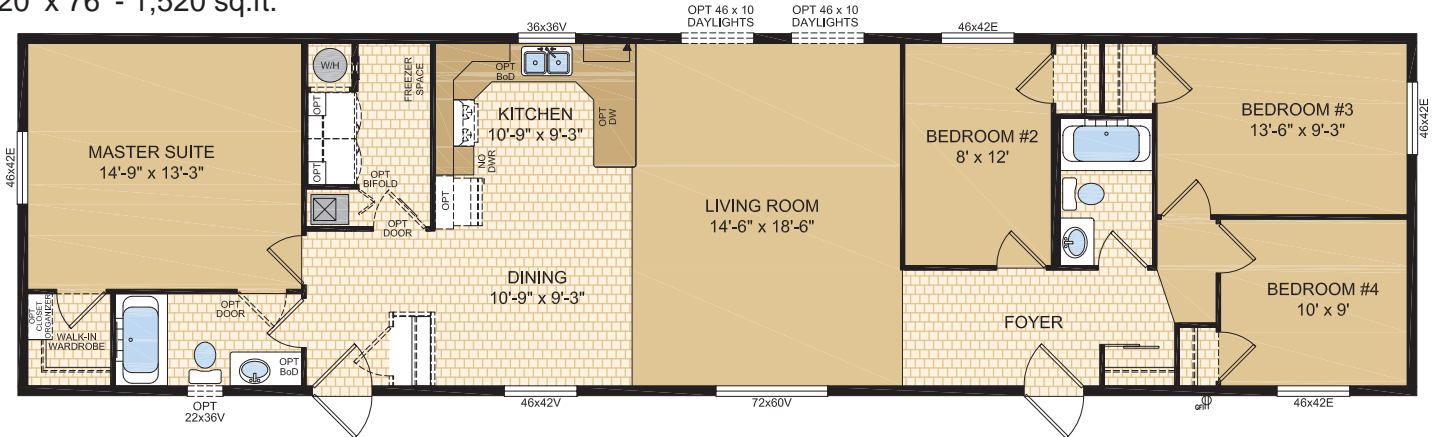
16' x 60' - 960 sq.ft.



Bayport

Model 20109

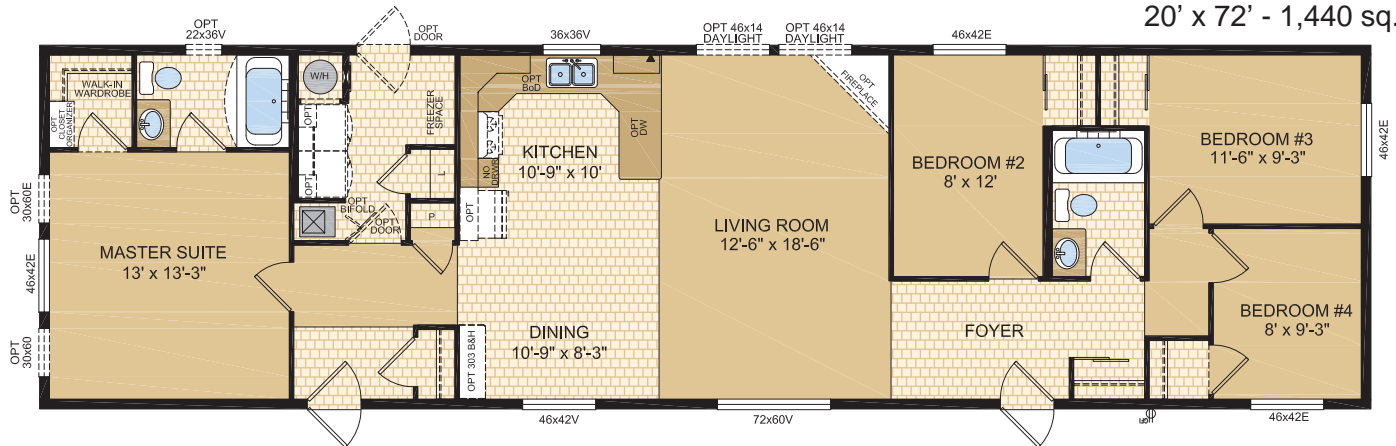
20' x 76' - 1,520 sq.ft.



Lauderdale

Model 20111

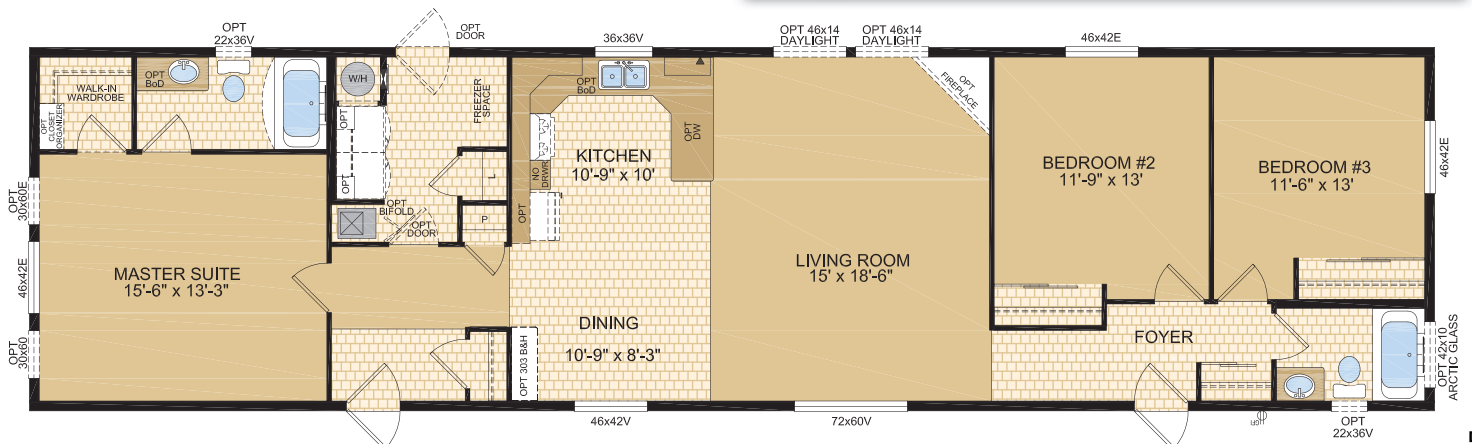
20' x 72' - 1,440 sq.ft.



Nashville

Model 20112

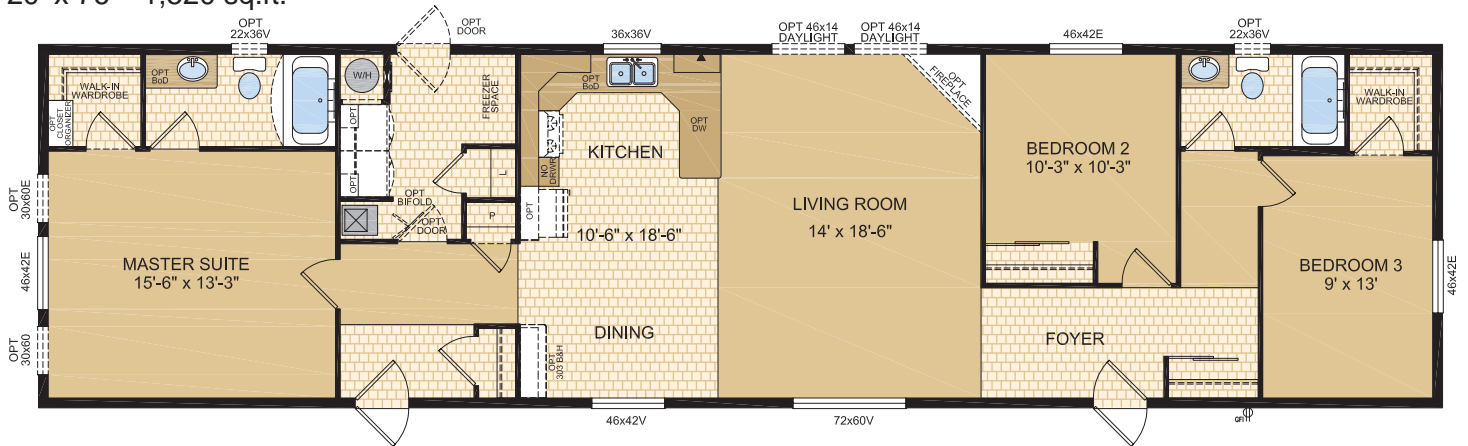
20' x 76' - 1,520 sq.ft.



Nantucket

Model 20113

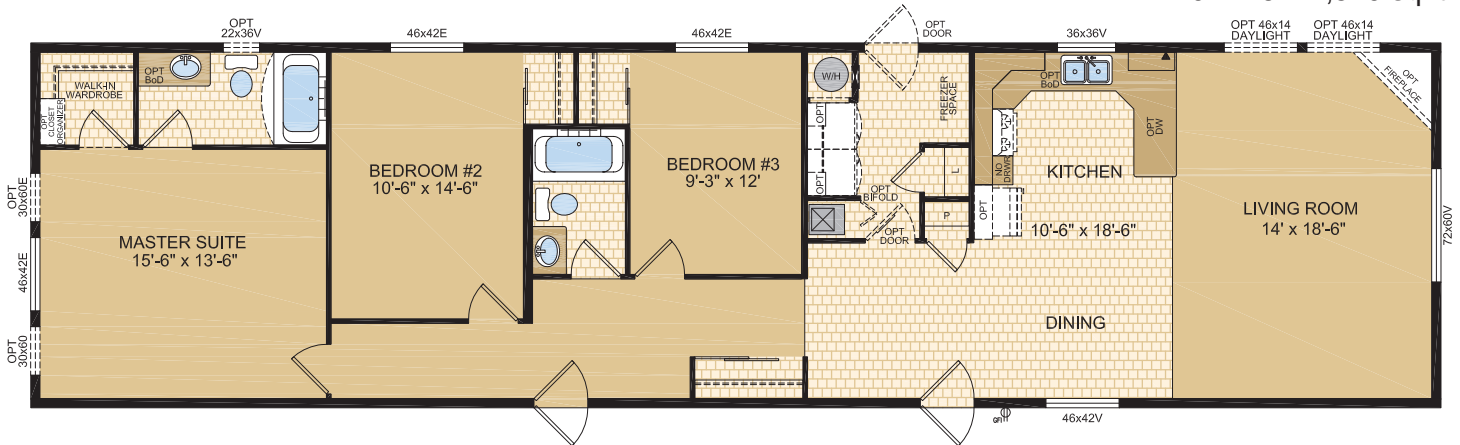
20' x 76' - 1,520 sq.ft.



Naples

Model 20114

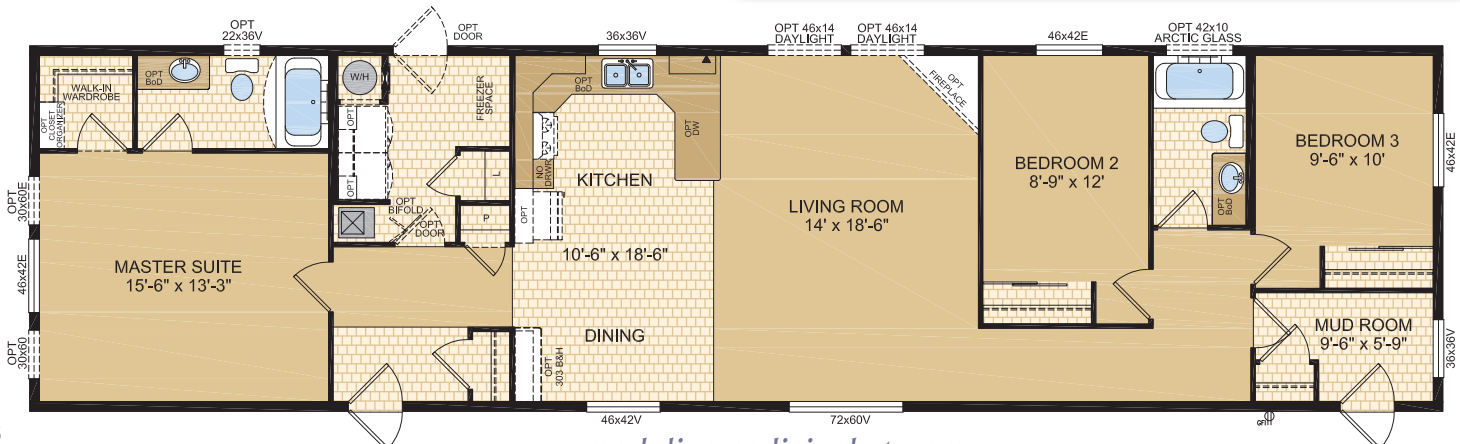
20' x 76' - 1,520 sq.ft.

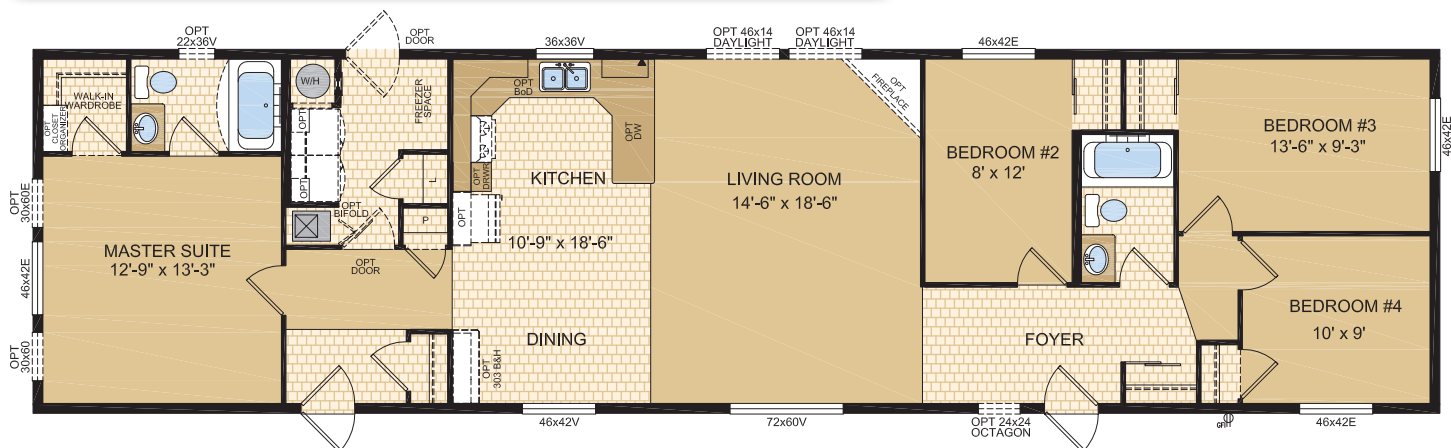
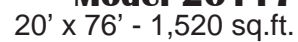
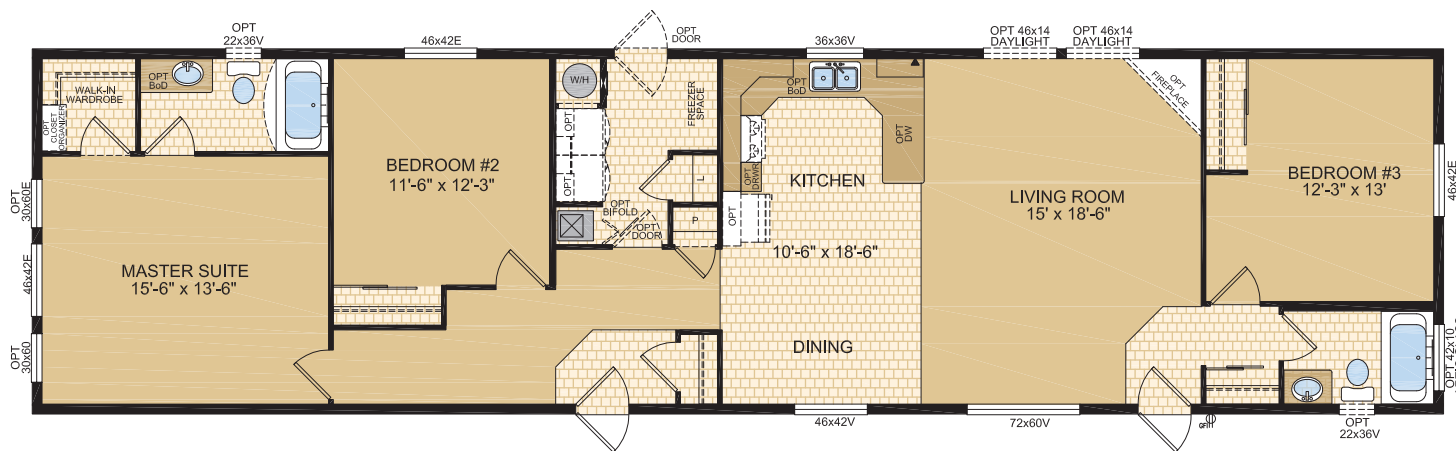


Olympia

Model 20115

20' x 76' - 1,520 sq.ft.







Exterior Wall Construction

Best Standard in the Housing Industry!

2"x6" EXTERIOR WALLS CONSTRUCTED
@ 24" O/C TO MAXIMIZE ENERGY
EFFICIENCY

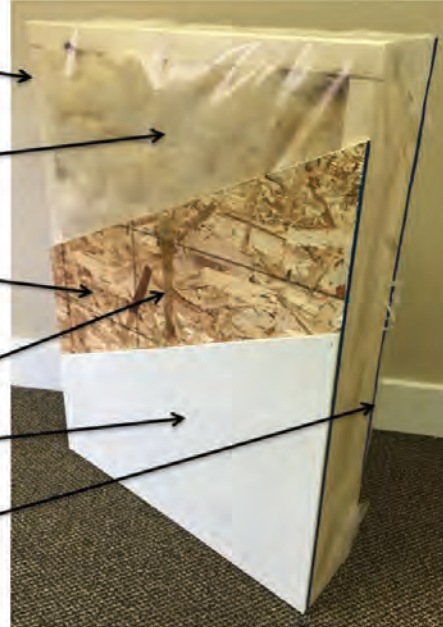
R20 INSULATION WITH 6 MIL POLY
(R22 ZONES 6 TO 8 UNDER
9.36 ENERGY CODE)

3/8" STRUCTURAL INTERIOR OSB
FOR THE STRONGEST WALL IN THE
INDUSTRY

ALPHA GLUE TO MAXIMIZE STRENGTH AND
MAINTAIN HOMES INTEGRITY

VINYL COVERED GYPROC FASTENED TO
OSB USING ALPHA GLUE SYSTEM

3/8" STRUCTURAL EXTERIOR OSB FASTENED
TO STUDS WITH SHEATHING STAPLES



"We surpass the competition!"



Samlan Homes Canada

Call: 780-219-5555

www.samlanhomes.com