

Lake House



Samlan Homes Canada
780-219-5555



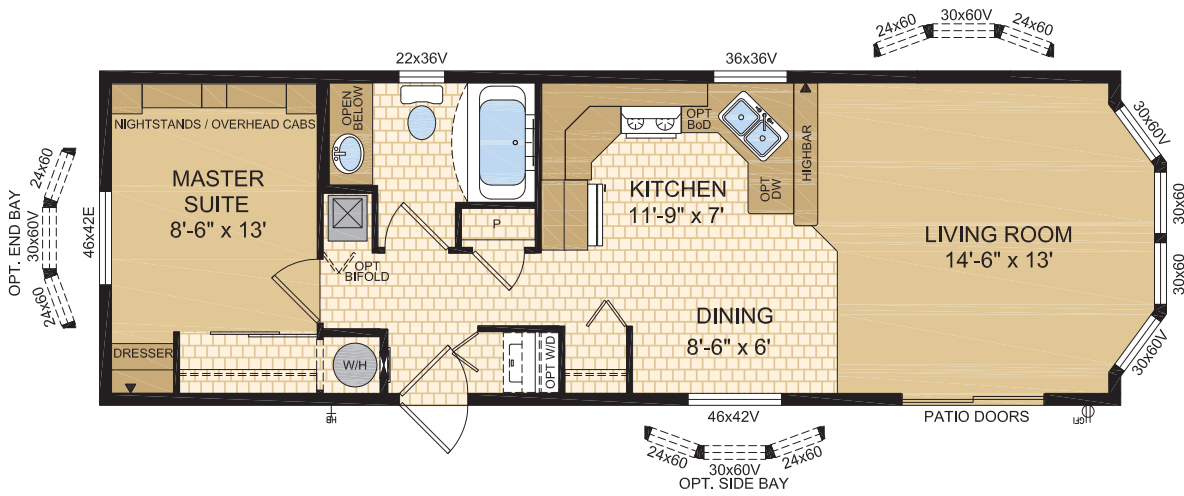
Samlan Homes
Canada
780-219-5555

Lake House

Havasu

Model 14070

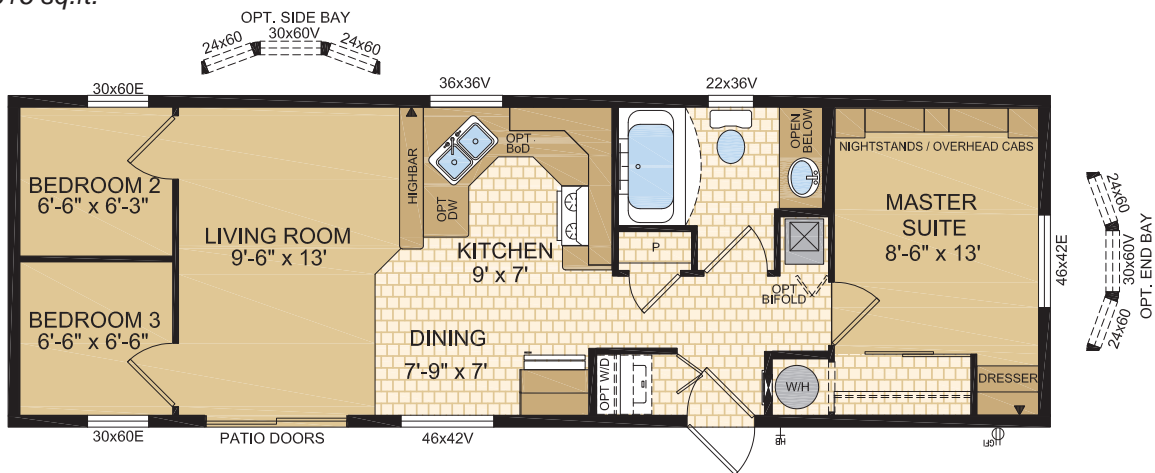
14' x 44' ~ 616 sq.ft.



Huron

Model 14071

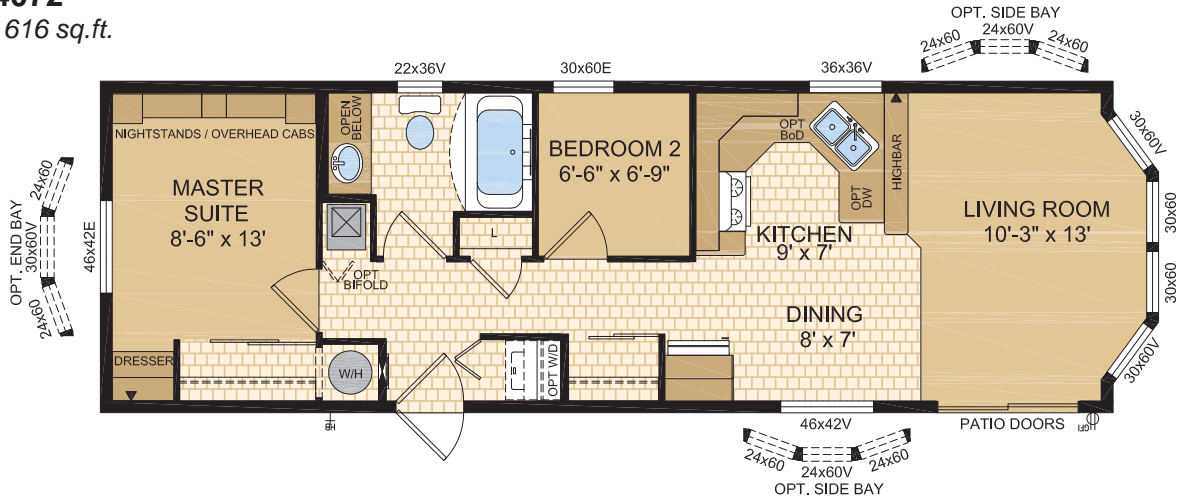
14' x 44' ~ 616 sq.ft.



Newell

Model 14072

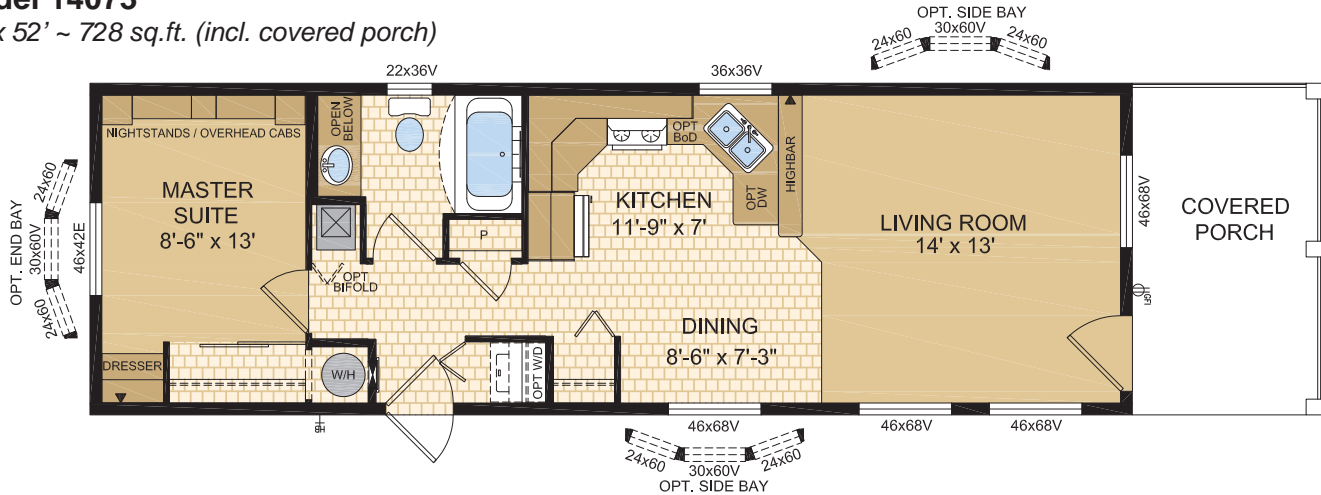
14' x 44' ~ 616 sq.ft.



Okanagan

Model 14073

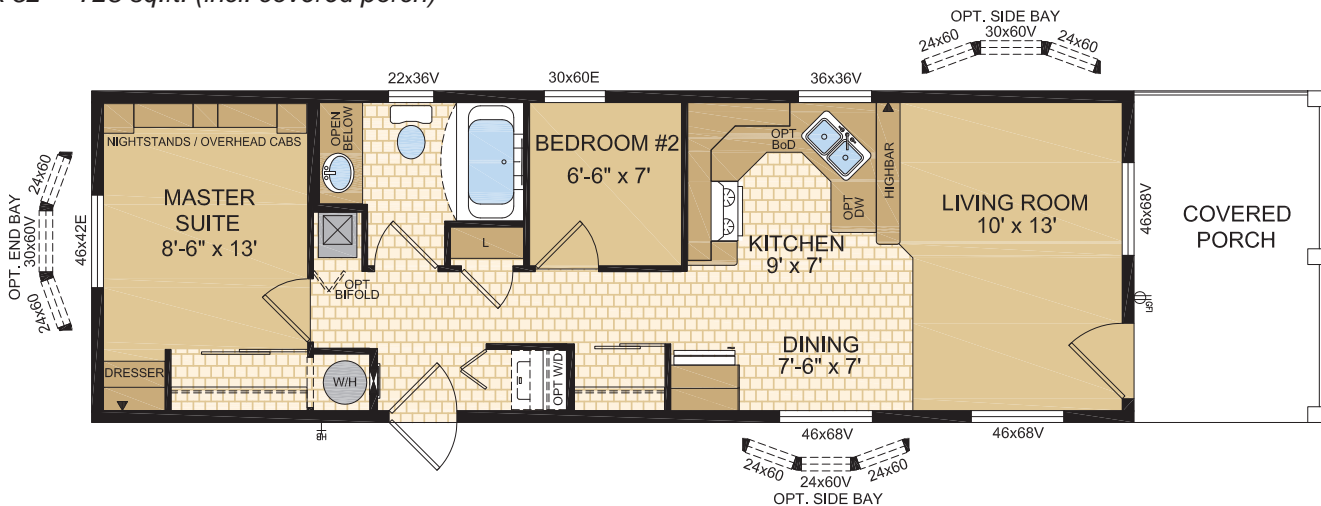
14' x 52' ~ 728 sq.ft. (incl. covered porch)



Waterton

Model 14074

14' x 52' ~ 728 sq.ft. (incl. covered porch)

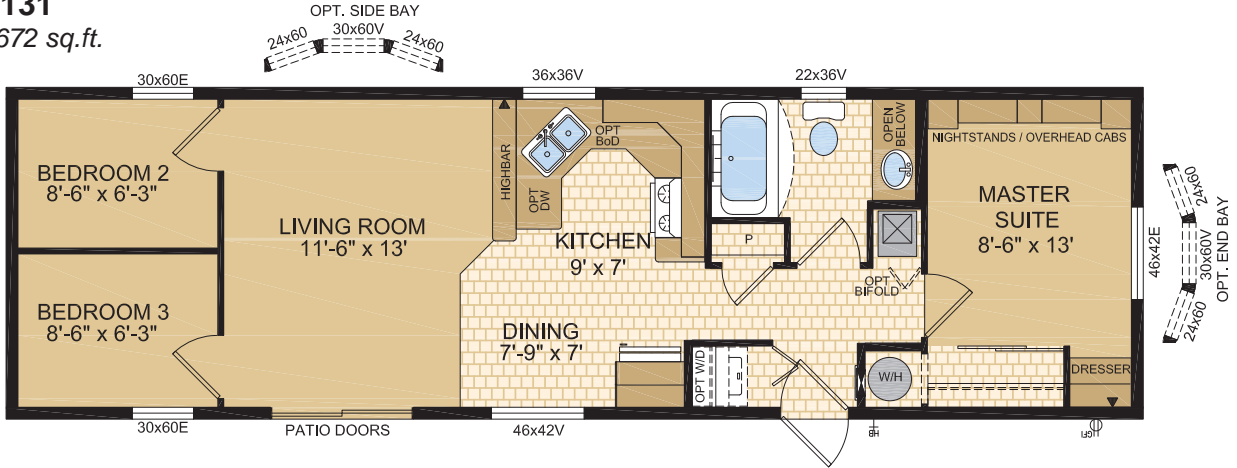


Lake House

Shuswap

Model 14131

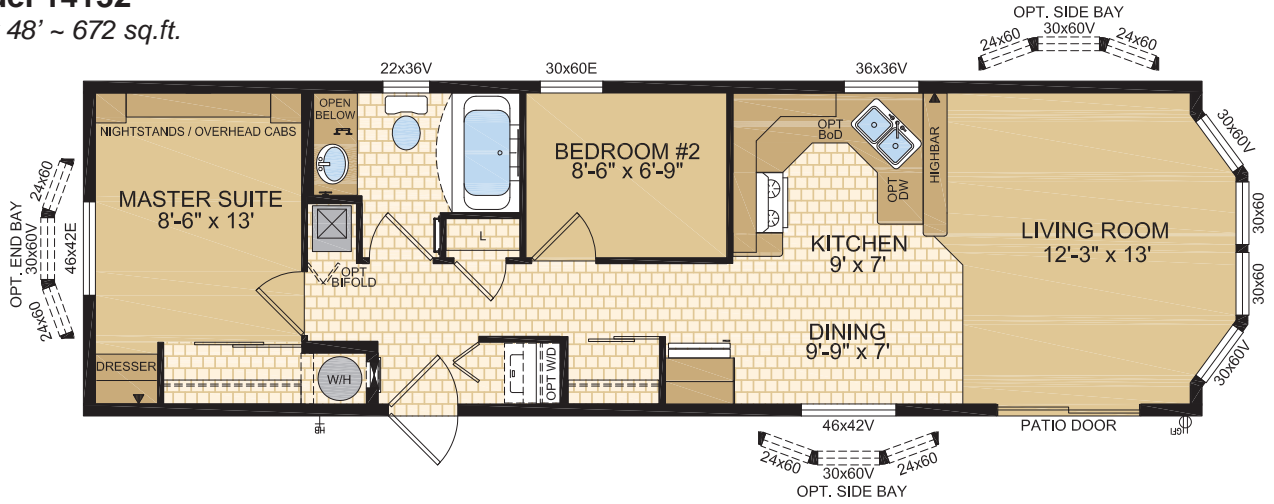
14' x 48' ~ 672 sq.ft.



Chelan

Model 14132

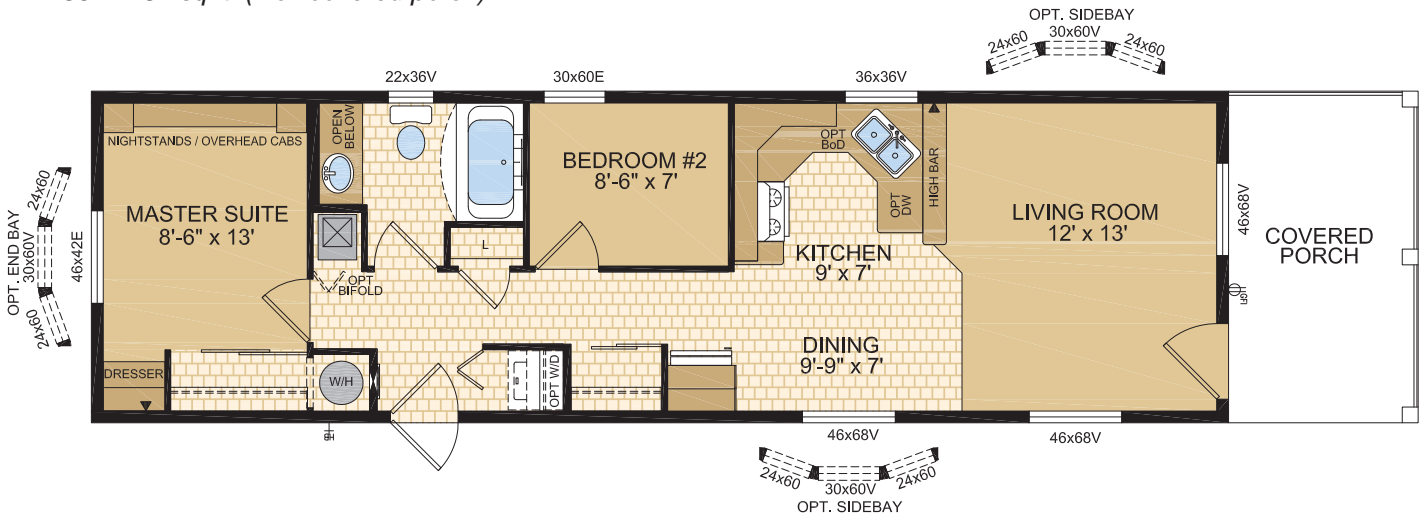
14' x 48' ~ 672 sq.ft.



Clearwater

Model 14133

14' x 56' ~ 784 sq.ft. (incl. covered porch)

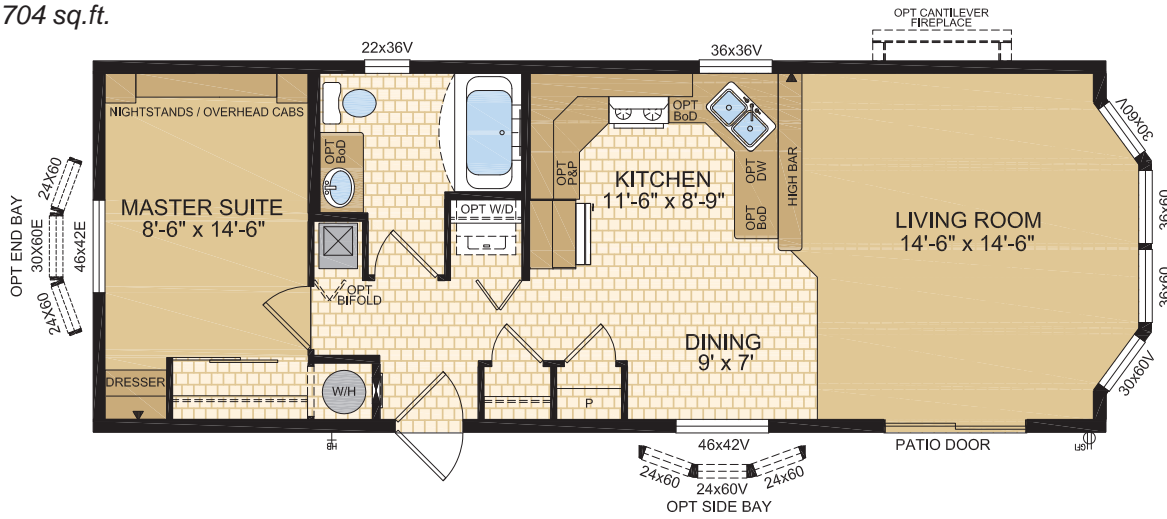


Lake House

Columbia

Model 16070

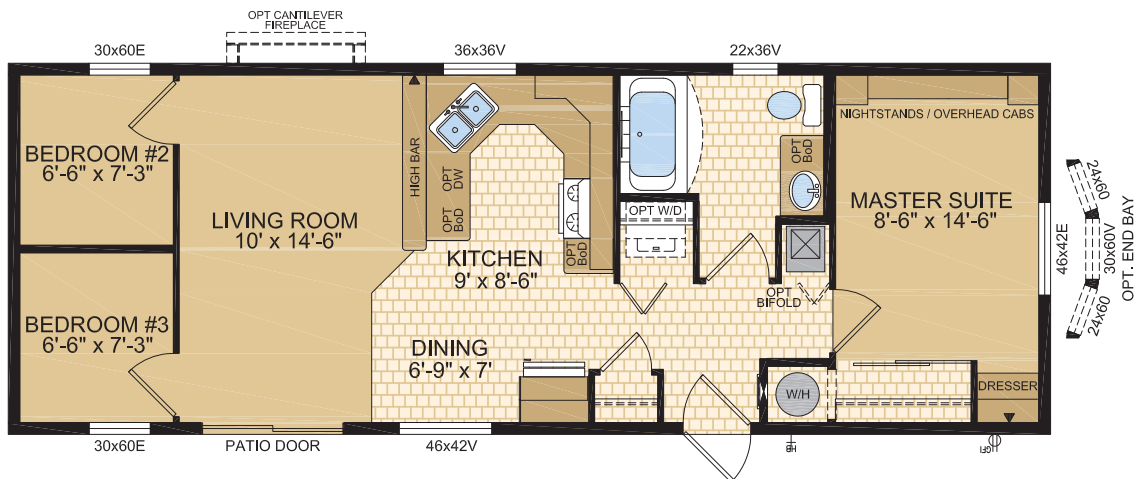
16' x 44' ~ 704 sq.ft.



Kawartha

Model 16071

16' x 44' ~ 704 sq.ft.



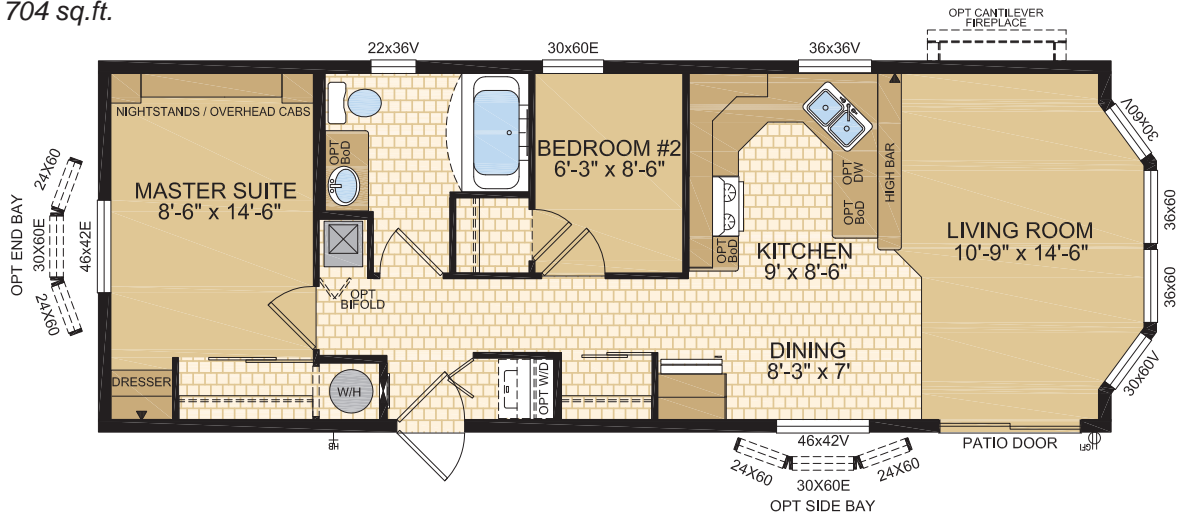
Samlan Homes Canada. Call 780-219-5555

Lake House

Athabasca

Model 16072

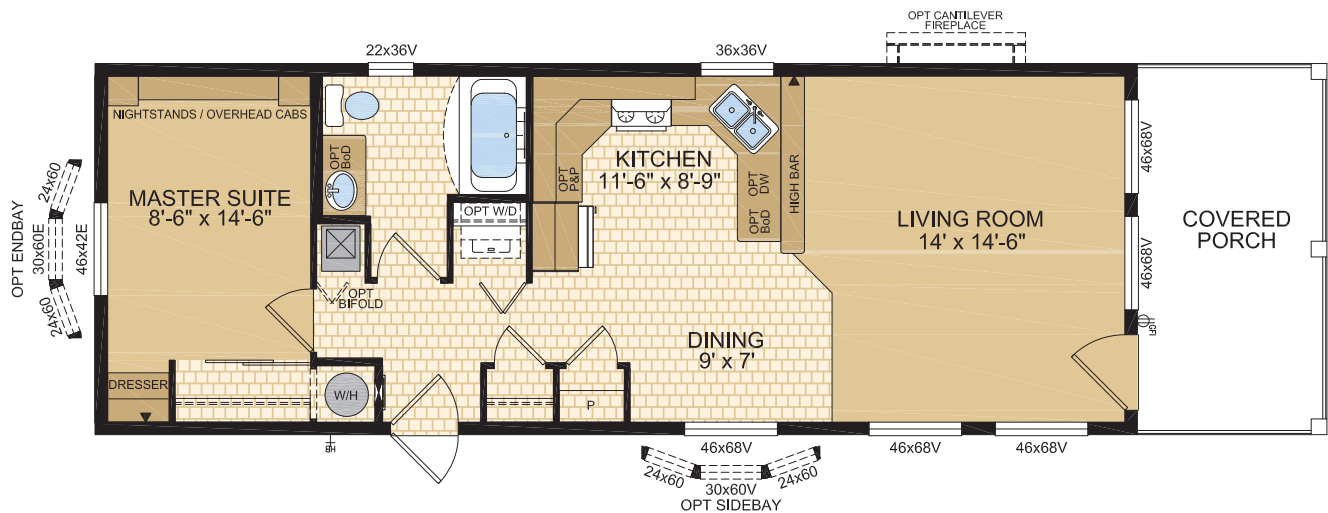
16' x 44' ~ 704 sq.ft.



Whitefish

Model 16073

16' x 52' ~ 832 sq.ft. (incl. covered porch)

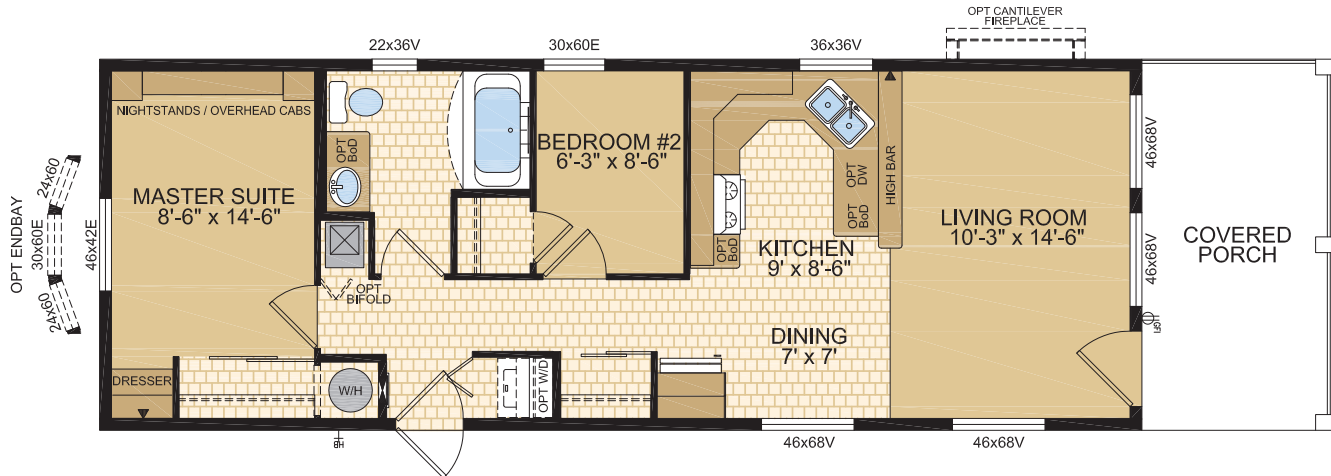


Lake House

Muskoka

Model 16074

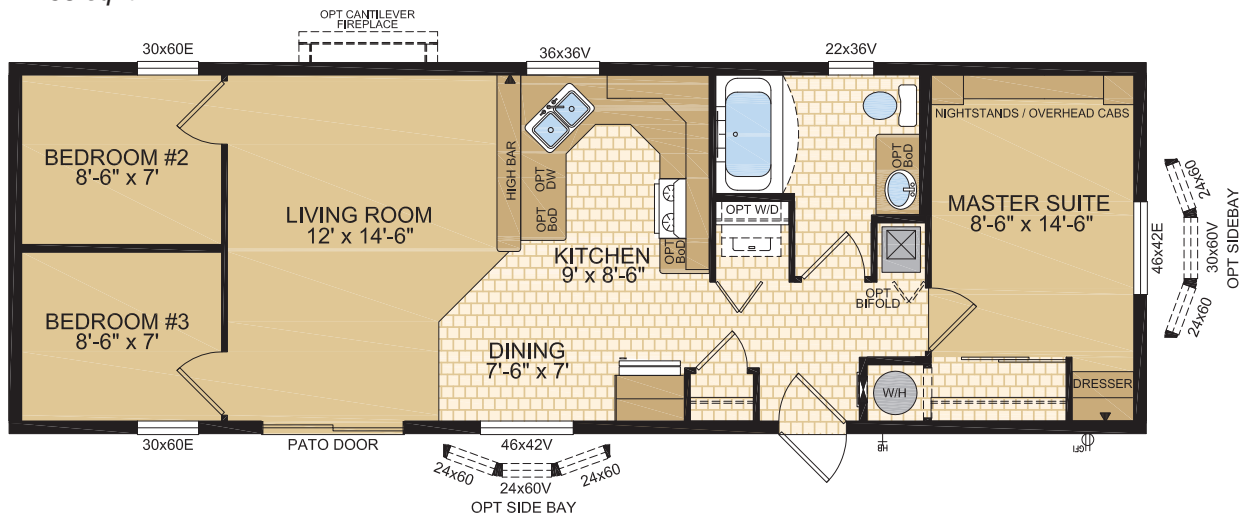
16' x 52' ~ 832 sq.ft. (incl. covered porch)



Victoria

Model 16131

16' x 48' ~ 768 sq.ft.



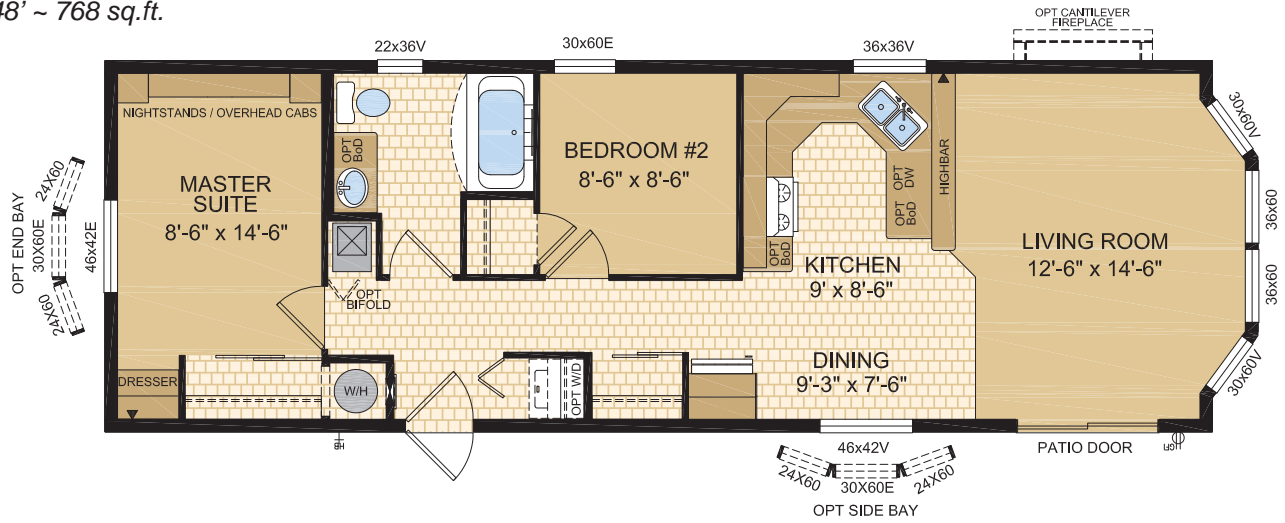
Samlan Homes Canada. Call 780-219-5555

Lake House

LaRonge

Model 16132

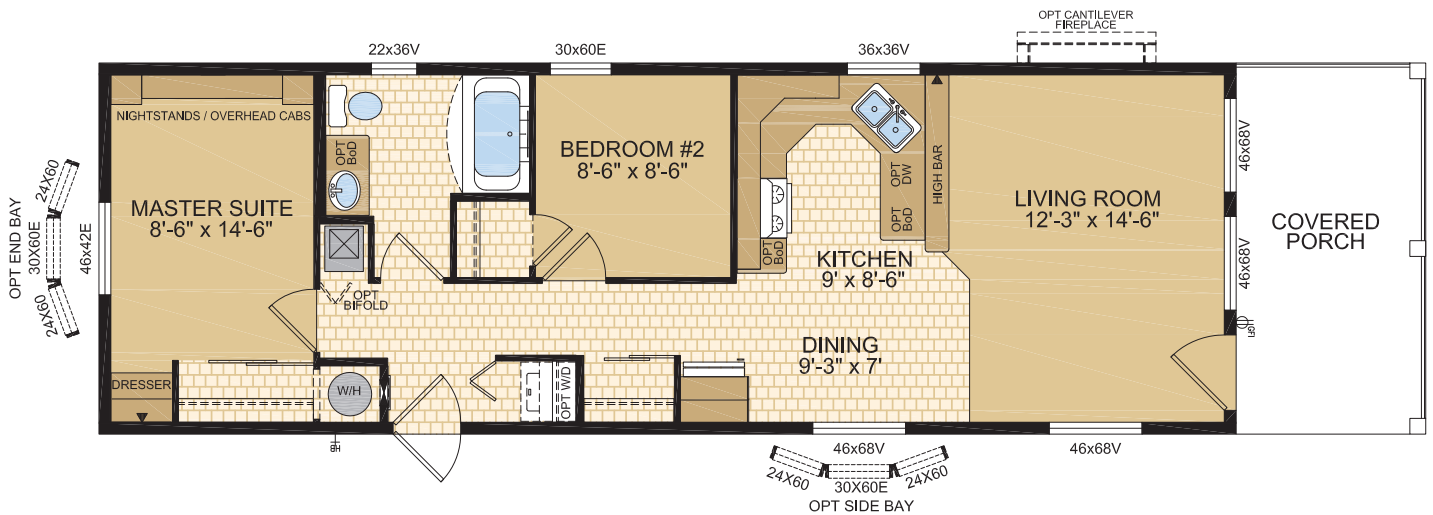
16' x 48' ~ 768 sq.ft.



Agassiz

Model 16133

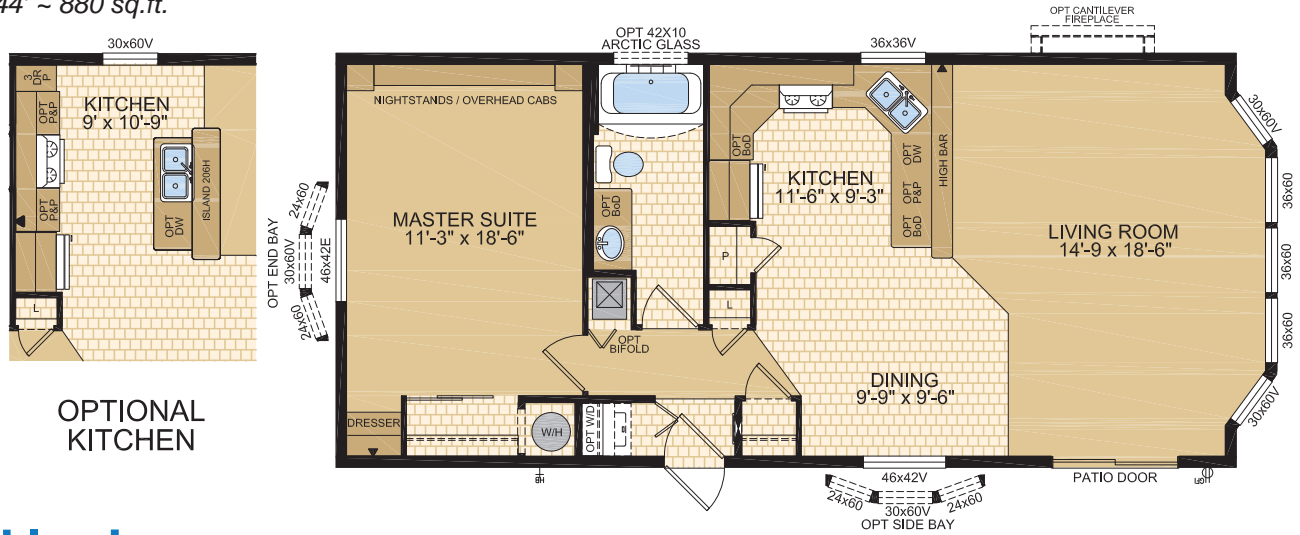
16' x 56' ~ 896 sq.ft. (incl. covered porch)



Tahoe

Model 20070

20' x 44' ~ 880 sq.ft.

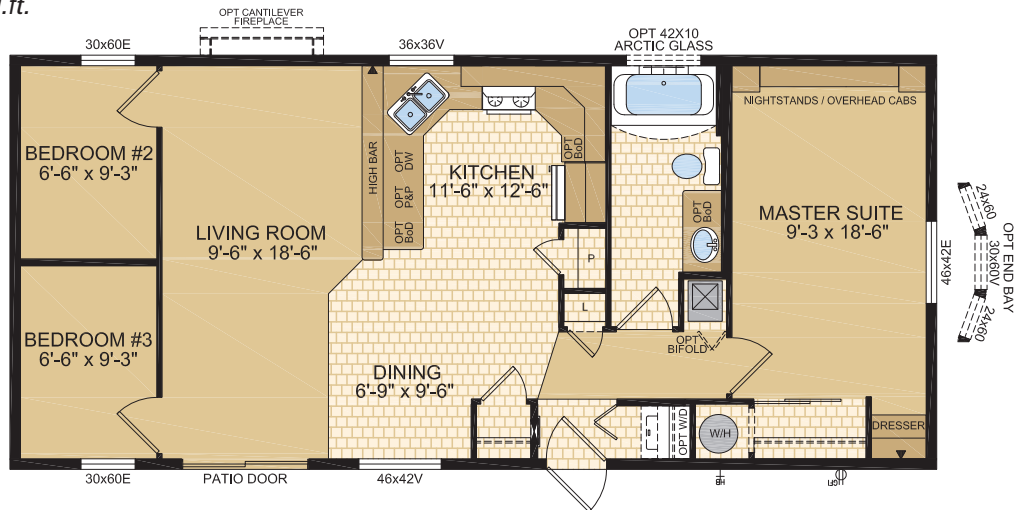


OPTIONAL KITCHEN

Kirkland

Model 20071

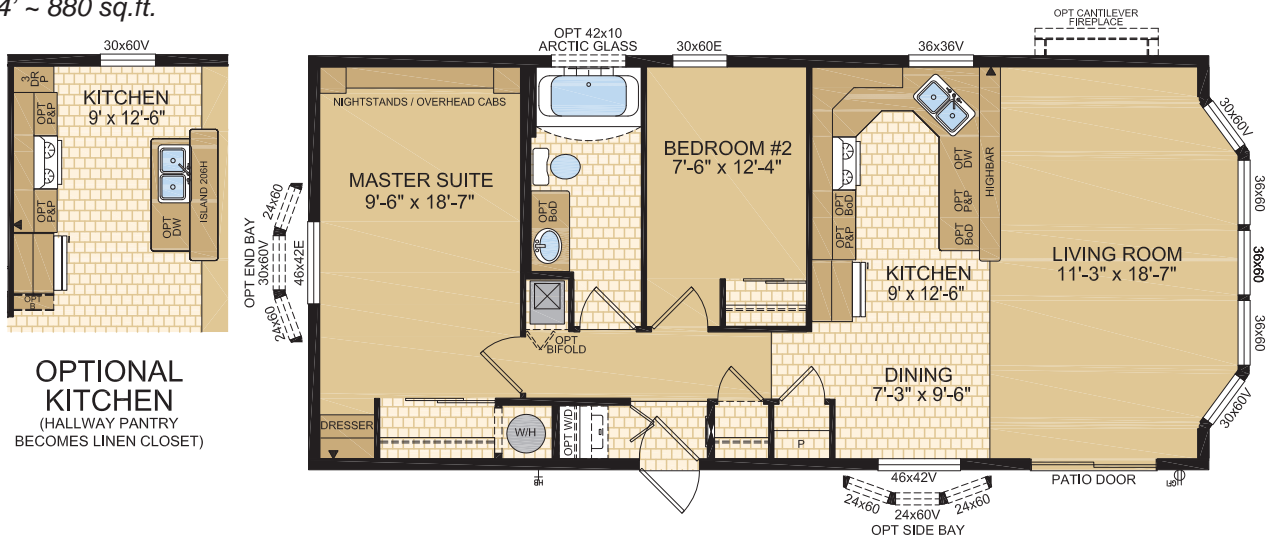
20' x 44' ~ 880 sq.ft.



Kootenay

Model 20072

20' x 44' ~ 880 sq.ft.



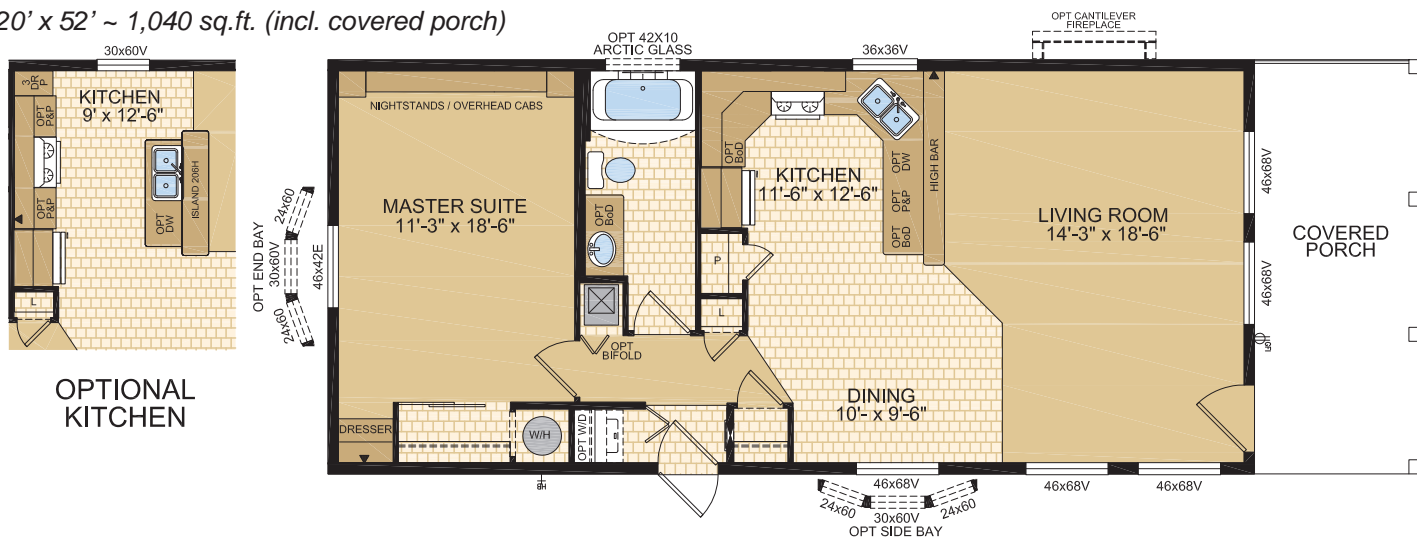
OPTIONAL KITCHEN
(HALLWAY PANTRY BECOMES LINEN CLOSET)

Lake House

Ness

Model 20073

20' x 52' ~ 1,040 sq.ft. (incl. covered porch)

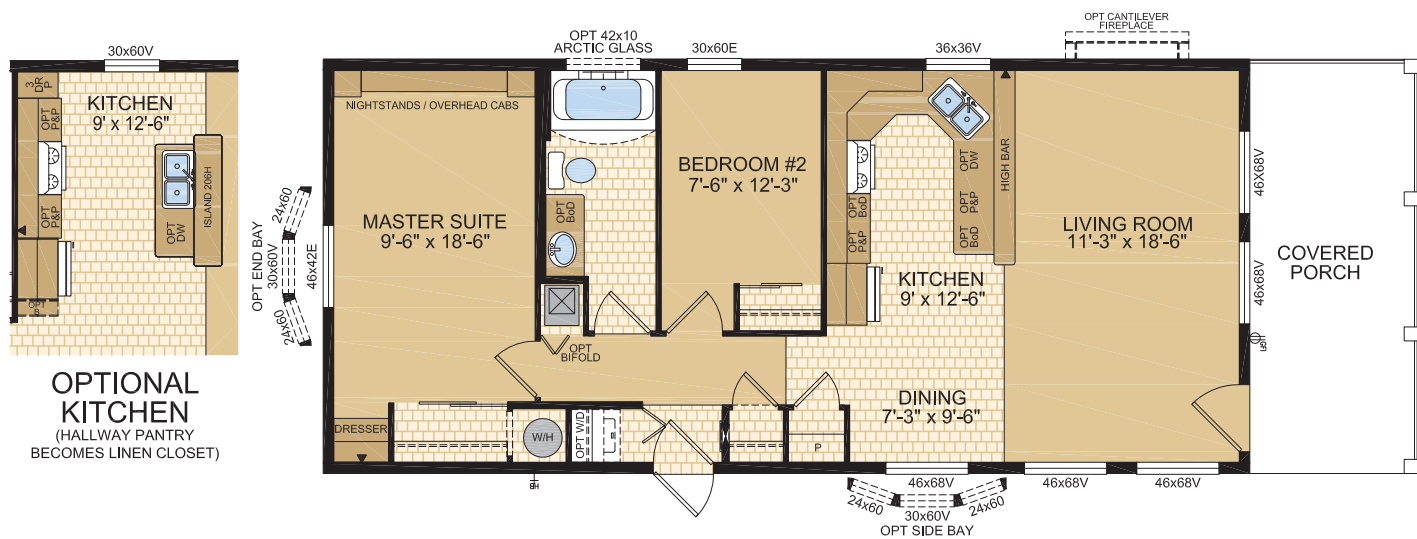


OPTIONAL KITCHEN

Harrison

Model 20074

20' x 52' ~ 1,040 sq.ft. (incl. covered porch)



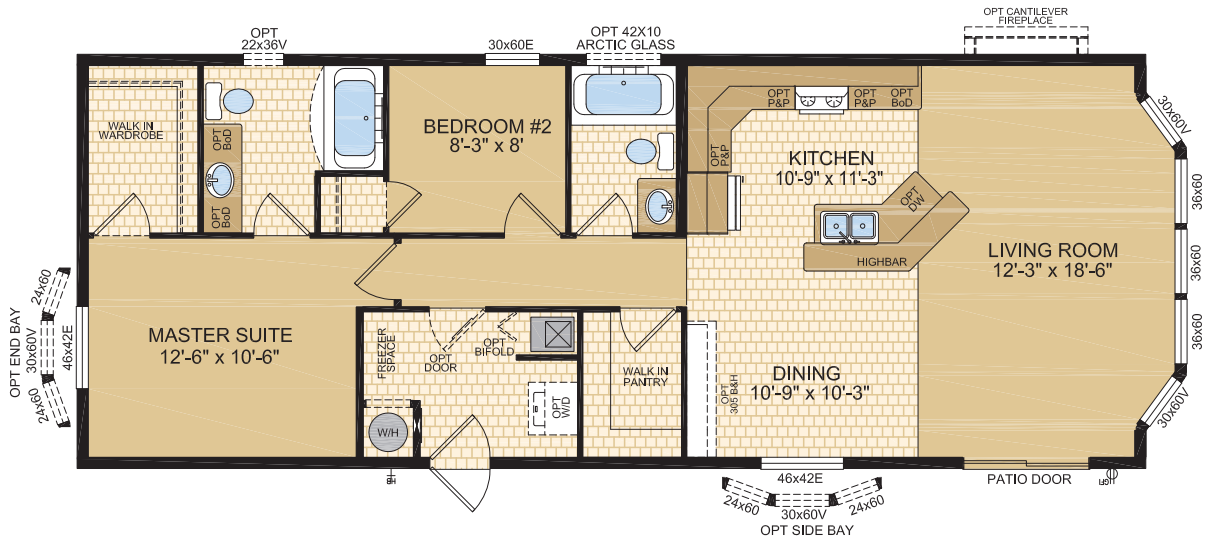
OPTIONAL KITCHEN
(HALLWAY PANTRY BECOMES LINEN CLOSET)

Lake House

Mara

Model 20076

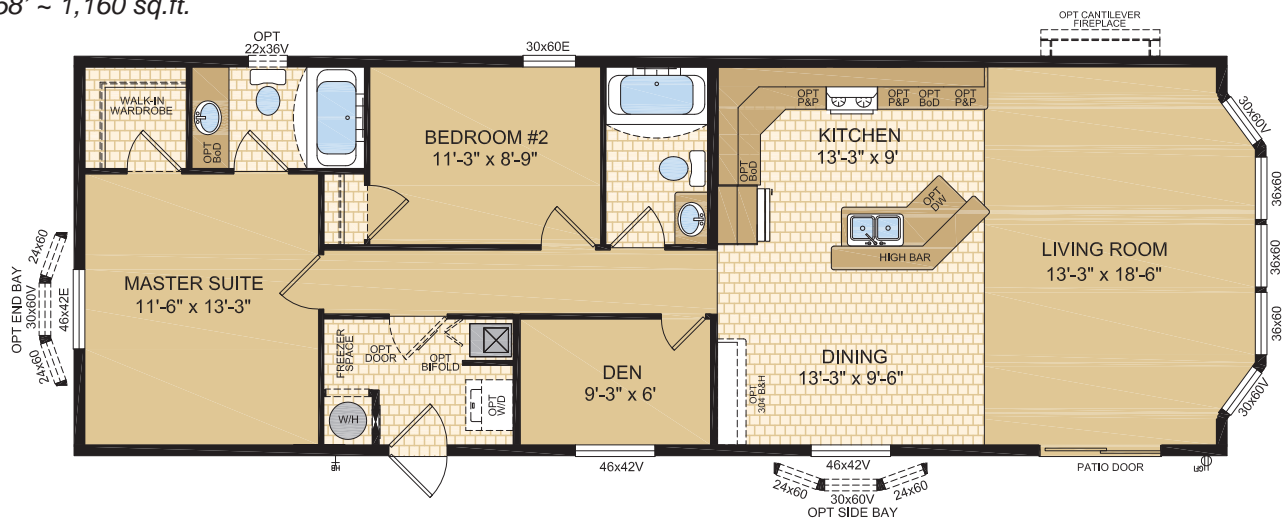
20' x 52' ~ 1,040 sq.ft.



Whiteshell

Model 20077

20' x 58' ~ 1,160 sq.ft.



Samlan Homes Canada. Call 780-219-5555

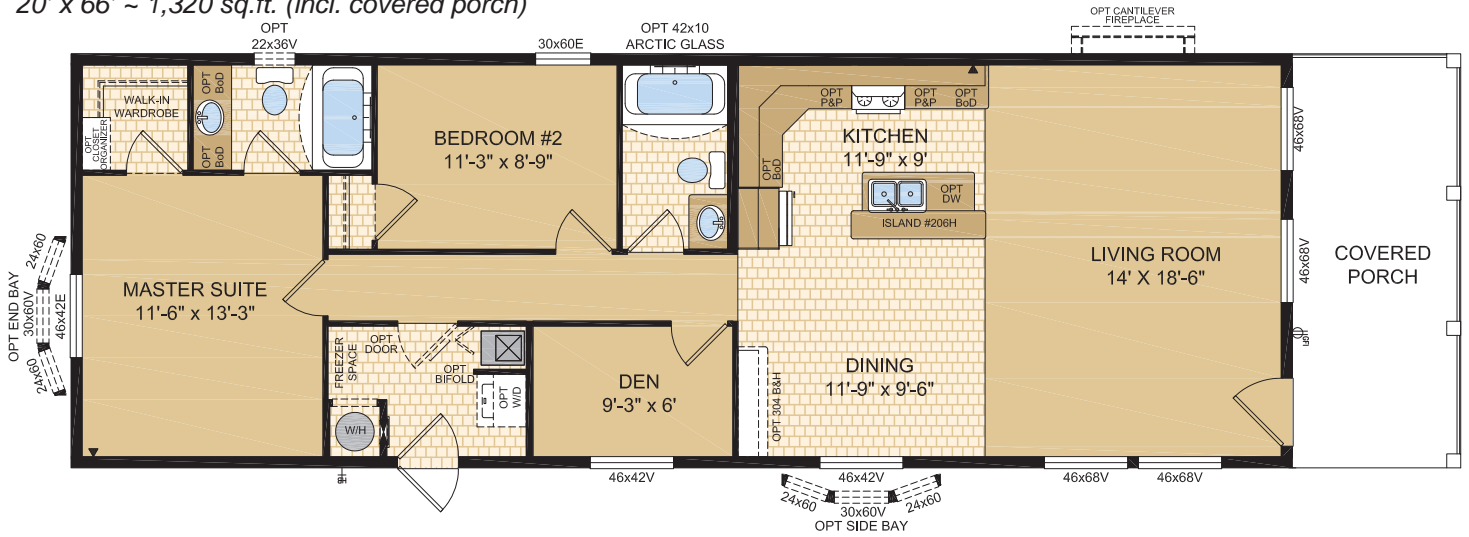
Lake House

Laronge

Model 20078

20' x 66' ~ 1,320 sq.ft. (incl. covered porch)

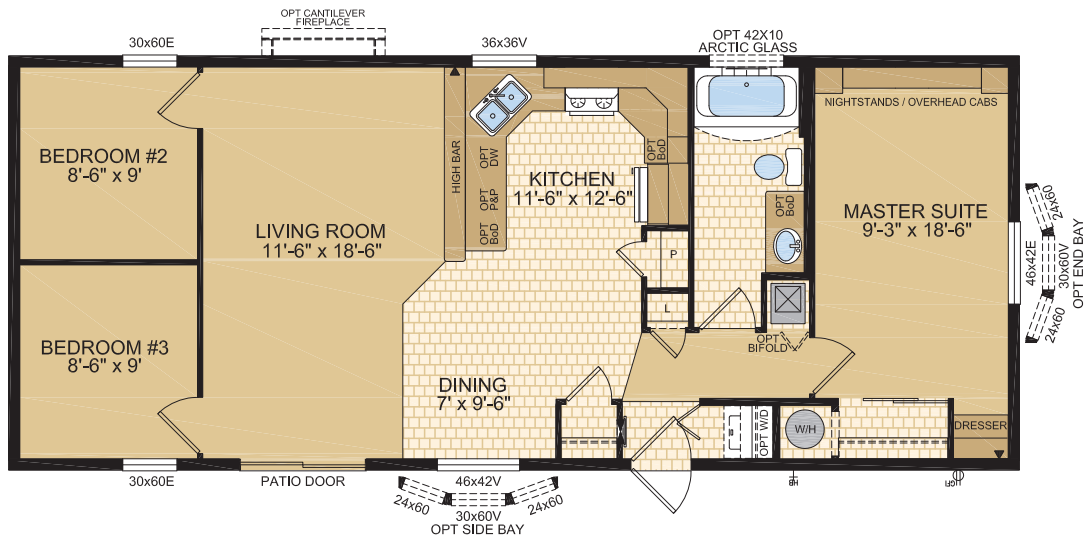
Note: rendering shown on coverpage



Christina

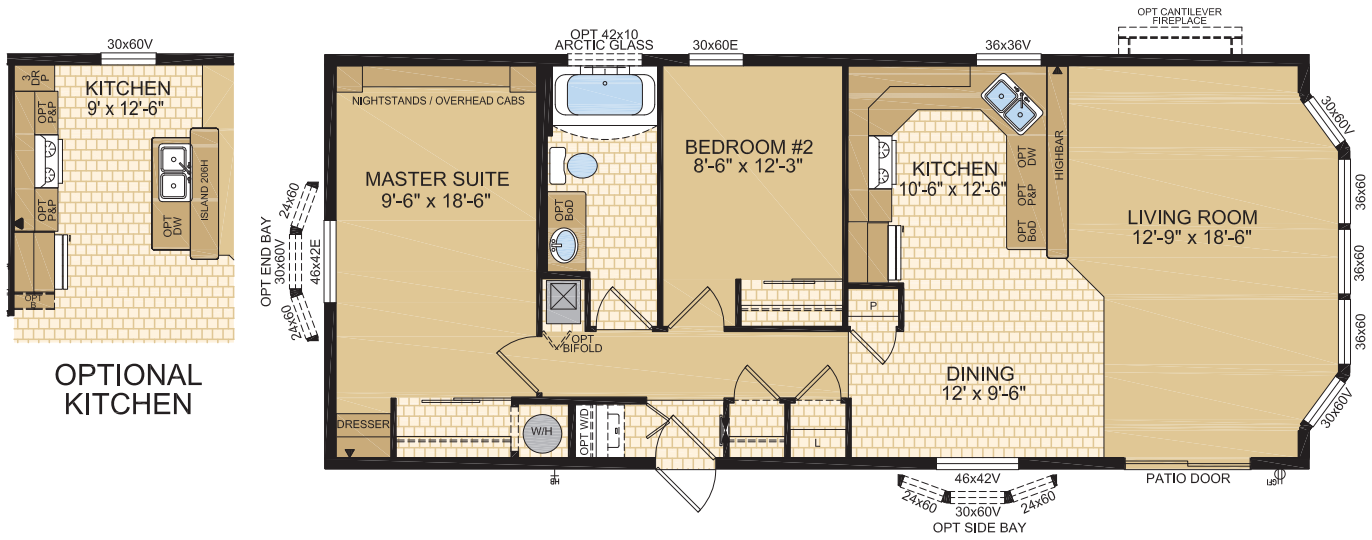
Model 20131

20' x 48' ~ 960 sq.ft.



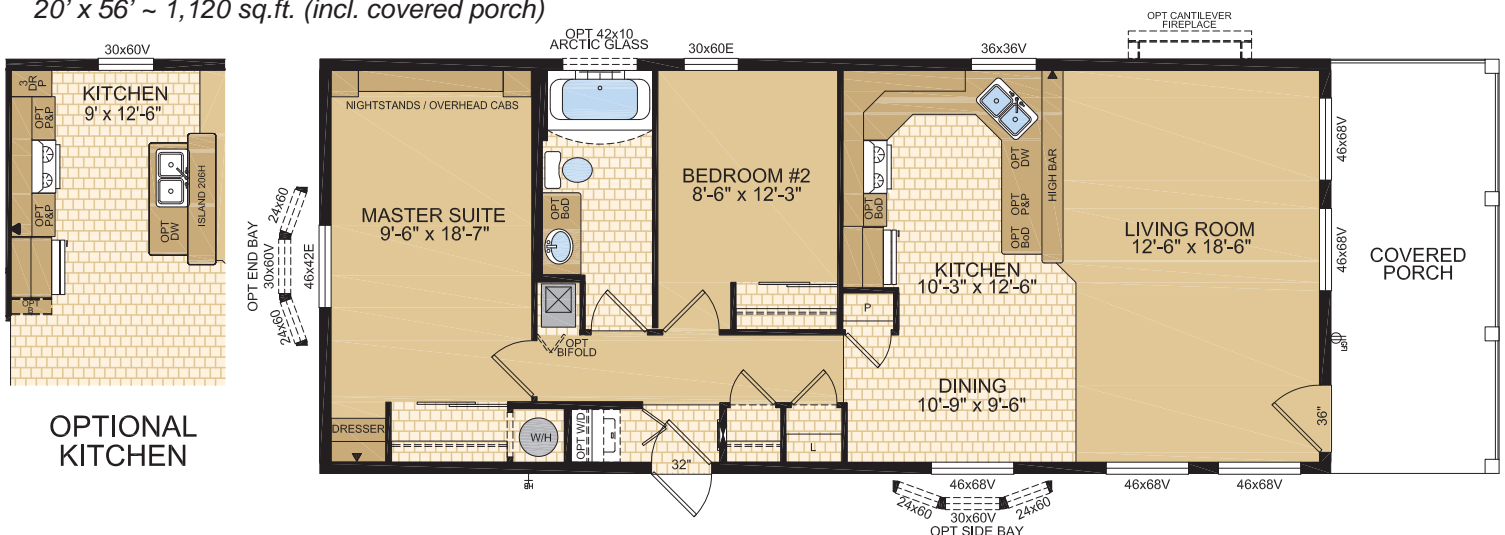
Lake House

Chaparrel Model 20132 20' x 48' ~ 960 sq.ft.



Cowichan Model 20133

20' x 56' ~ 1,120 sq.ft. (incl. covered porch)

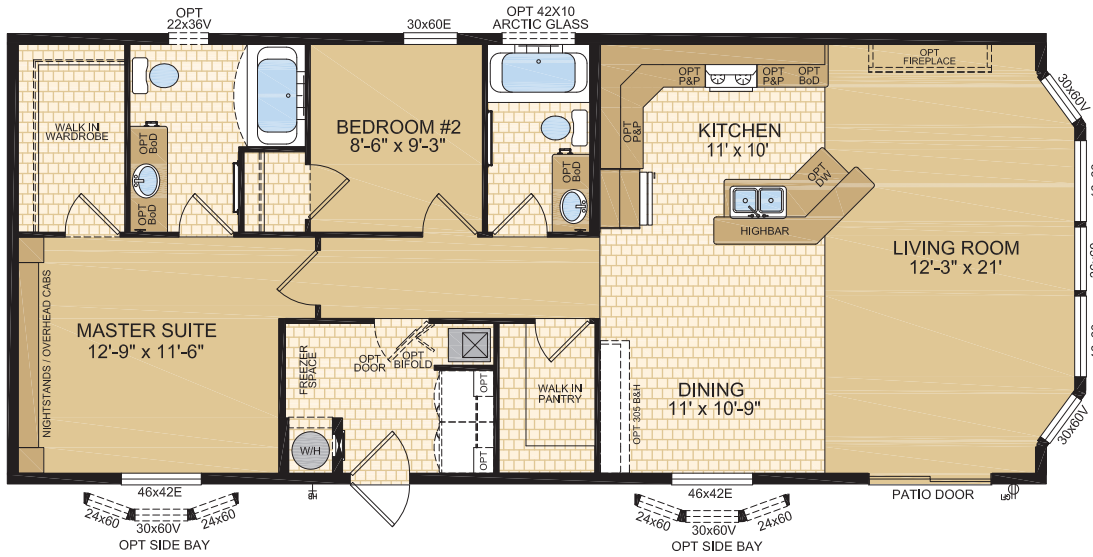


Samlan Homes Canada. Call 780-219-5555

Lake House

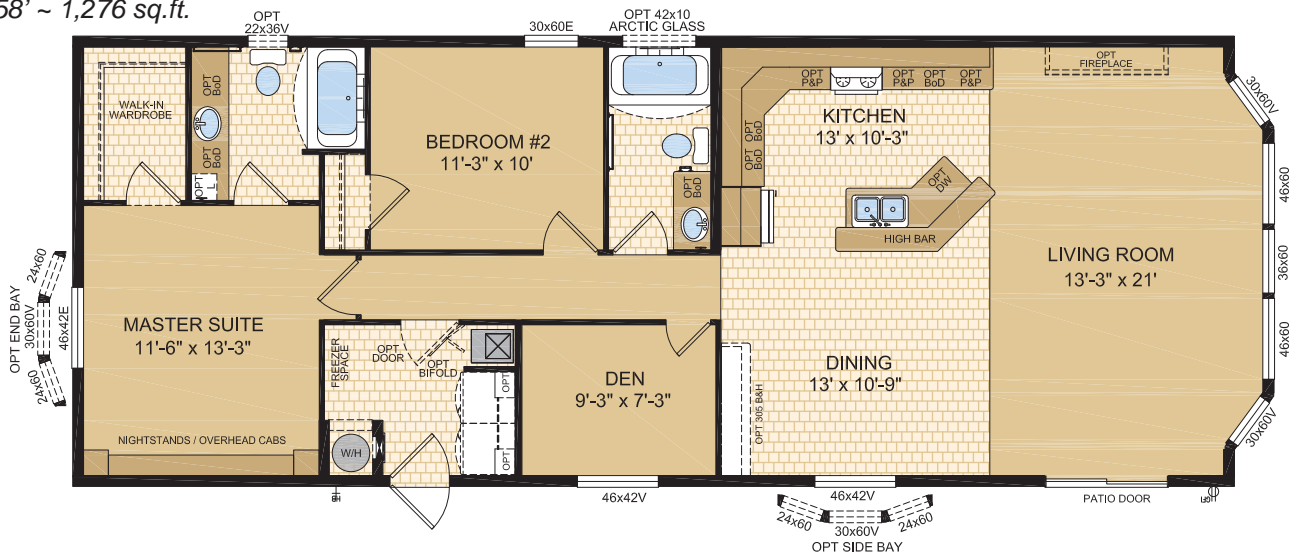
Cypress Model 22076

22' x 52' ~ 1,144 sq.ft.



Kenosee Model 22077

22' x 58' ~ 1,276 sq.ft.



Waskesui

Model 22079

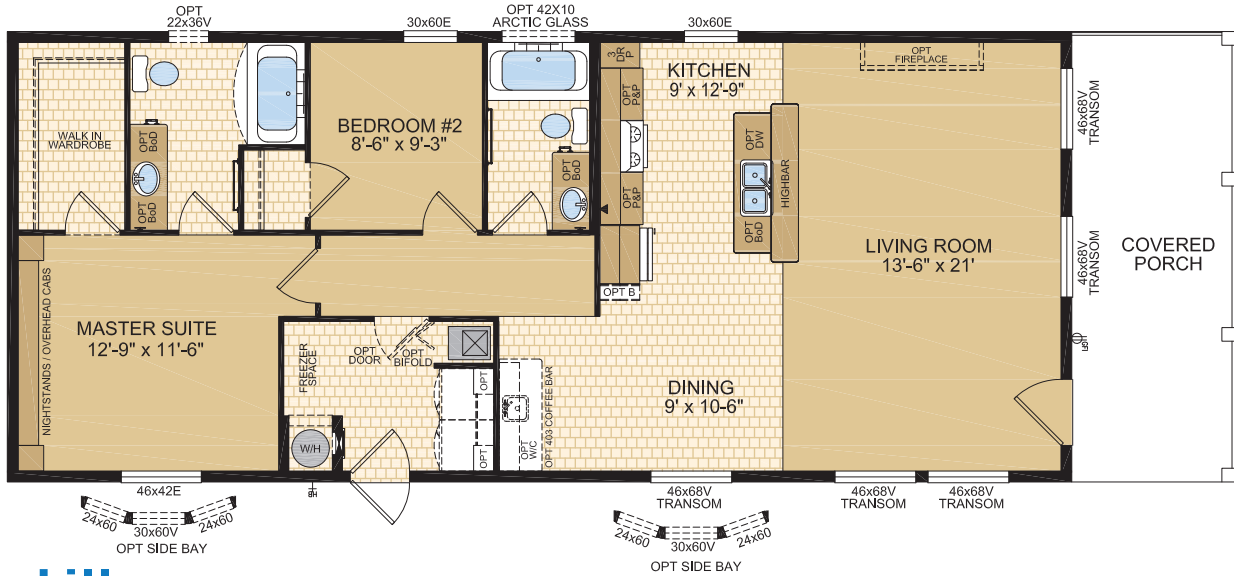
22' x 52' ~ 1,144 sq.ft.



Capilano

Model 22080

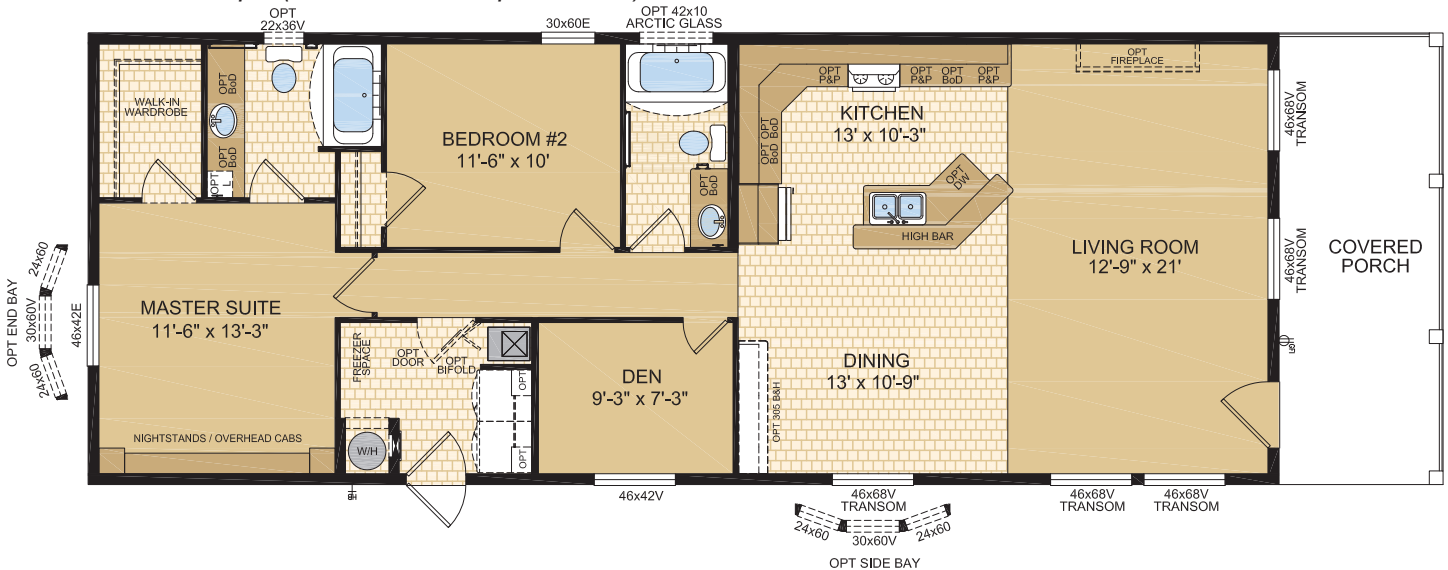
22' x 60' ~ 1,144 sq.ft. (Covered Porch sq.ft. not incl.)



Churchill

Model 22081

22' x 66' ~ 1,276 sq.ft. (Covered Porch sq.ft. not incl.)



STANDARD FEATURES & SPECIFICATIONS

DISTINCTIVE FEATURES

- Built to the A-277 code Zone 7A
- 8' Ceilings
- Front living room models come with Bay window
- Front porch models come with 9-lite front door and transom windows in the living room and dining room
- Cathedral ceiling throughout
- Cathedral cove moulding throughout
- Décor switches and receptacles
- 12" side, 18" front vented eaves (*does not include rear*)
- Residential-type appliances and bathroom fixtures
- Deluxe bedroom nightstand/cabinets (*select models*)
- Serenity air conditioned ready furnace (*split system*)

GENERAL CONSTRUCTION

- 2" x 10" Floor Joist at 16" o.c. (14', 16', 20' Wides)
- Engineered open web floor truss @ 16" o.c. with heavy tubular steel frame (22' Wides)
- Exterior walls built 2"x6" and strengthened with 3/8" OSB sheathing on inside and outside of wall
- 6 mil Interior vapour barrier
- Floor decking, 19/32" T&G OSB, glued & screwed
- 3/8" Exterior O.S.B. sheathing
- 7/16" Roof sheathing
- Architectural asphalt shingle roof (*limited lifetime warranty*)
- Engineered roof trusses:
 - 5.65/12 roof pitch on 14' wide models
 - 5/12 roof pitch on 16' wide models
 - 4/12 roof pitch on 20' & 22' wide models
- Heavy tubular steel frame
- Maintenance free vinyl lap siding with metal fascia
- Residential 1.36 U-value, Maintenance Free, Low E Argon Filled PVC vinyl windows (*meets zone 8*)
- Residential vinyl patio door with lock (*most models*)
- Coach lights at all exterior entrances (*Covered Porches Receive Exterior Pot Lights ILO Coach Light*)
- Screen doors at rear exterior door
- Exterior GFI receptacle
- Exterior frost free tap
- Insulation meets zone requirements as per zone 7A/7B/8 of the 9.36 Energy Code: Floors R-48, Walls R-22 & Ceiling R-40 (*min*)
- Textured (*primed*) gyproc ceiling

TASTFUL INTERIORS

- Plush saxony carpet in Living Room and all Bedrooms
- Quality cushioned linoleum flooring in all other areas
- 2" white faux wood blinds (*inset in window*) in all areas except bathrooms
- Pre-finished interior passage doors in Crystal White colour

BRIGHT, BEAUTIFUL KITCHENS

- Deluxe tile backsplash
- Pantry – select models
- 19 cu ft 2-Door frost free refrigerator
- 30" Easy clean electric range
- Exterior vented range hood with light
- Double stainless steel sink
- Dowelled full modular cabinetry w/crown moulding
- Three distinctive colors of cabinet doors to choose from with matching moulding and trim colours

SPACIOUS BATHS

- Obscure bath window
- Curved Shower rods in all tubs
- Deluxe tile backsplash
- One piece quality fiberglass tub and shower unit with single lever
- Power bath fan on separate switch
- Theatrical lights
- Residential type toilet and sink
- GFI receptacle

UTILITY SERVICES

- High efficiency (95.1+AFUE) gas furnace with condensation pump with two speed blower and A/C Ready Split
- Programmable thermostat
- Upgraded Building Envelope to meet 0.20 L/M2S
- 3m Insulated Water Lines on Both Hot and Cold Sides at Water Heater
- 33 Imp (40 US) Gallon electric hot water tank 9.36 Compliant
- 100 Amp electrical service
- GFI protected receptacle for heat tape
- Primary exhaust fan c/w dehumidistat & switch
- CO2/Smoke detector(s) c/w battery backup
- Smoke detectors in bedrooms
- Arc Fault protection in areas required by code
- Two communication outlets (LR & MBR)

Samlan Homes Canada
Call 780-219-5555
www.samlanhomes.com