

Samlan Homes Canada

Call: 780-219-5555

www.samlanhomes.com



"All the Comforts of Home"

www.samlanhomes.com

Bailey

Model 12036

12' x 36' ~ 432 sq.ft.



OPTIONAL
LAYOUT

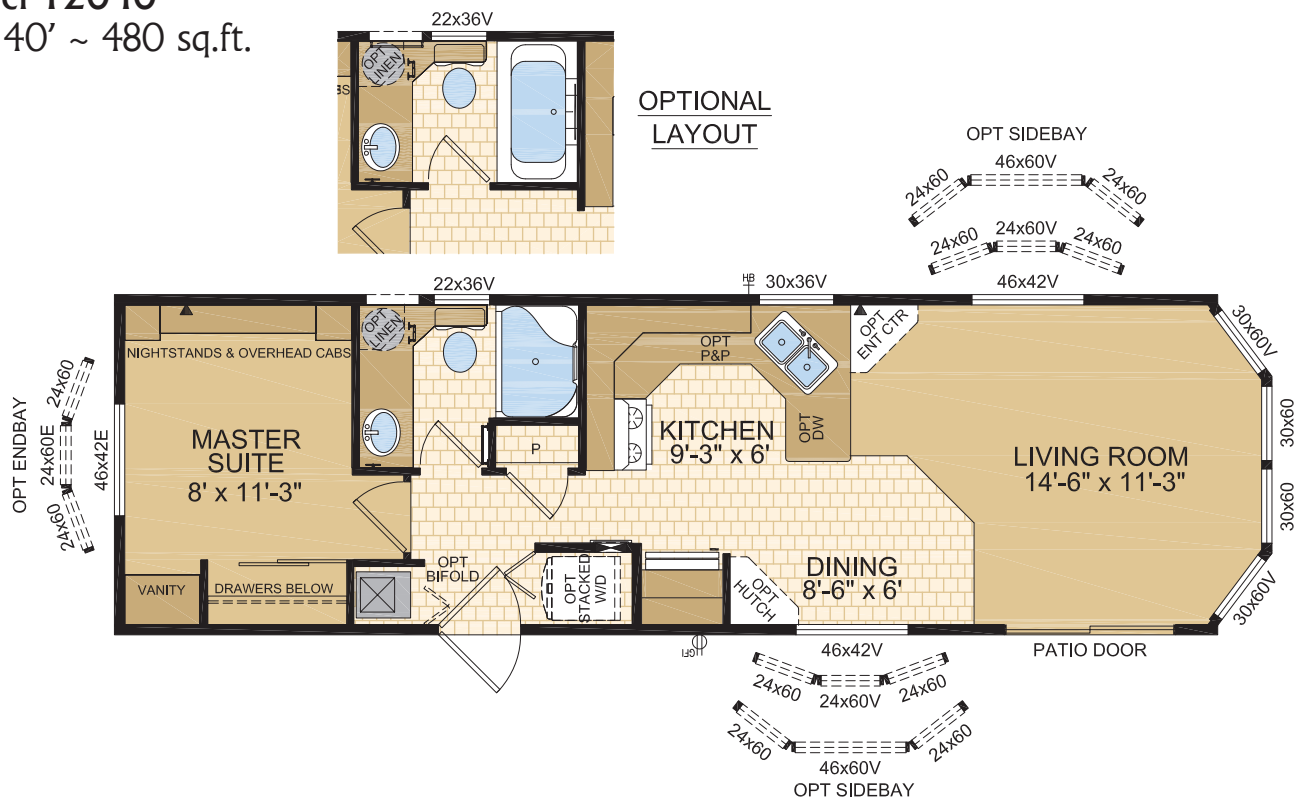


Logan

Model 12040

12' x 40' ~ 480 sq.ft.

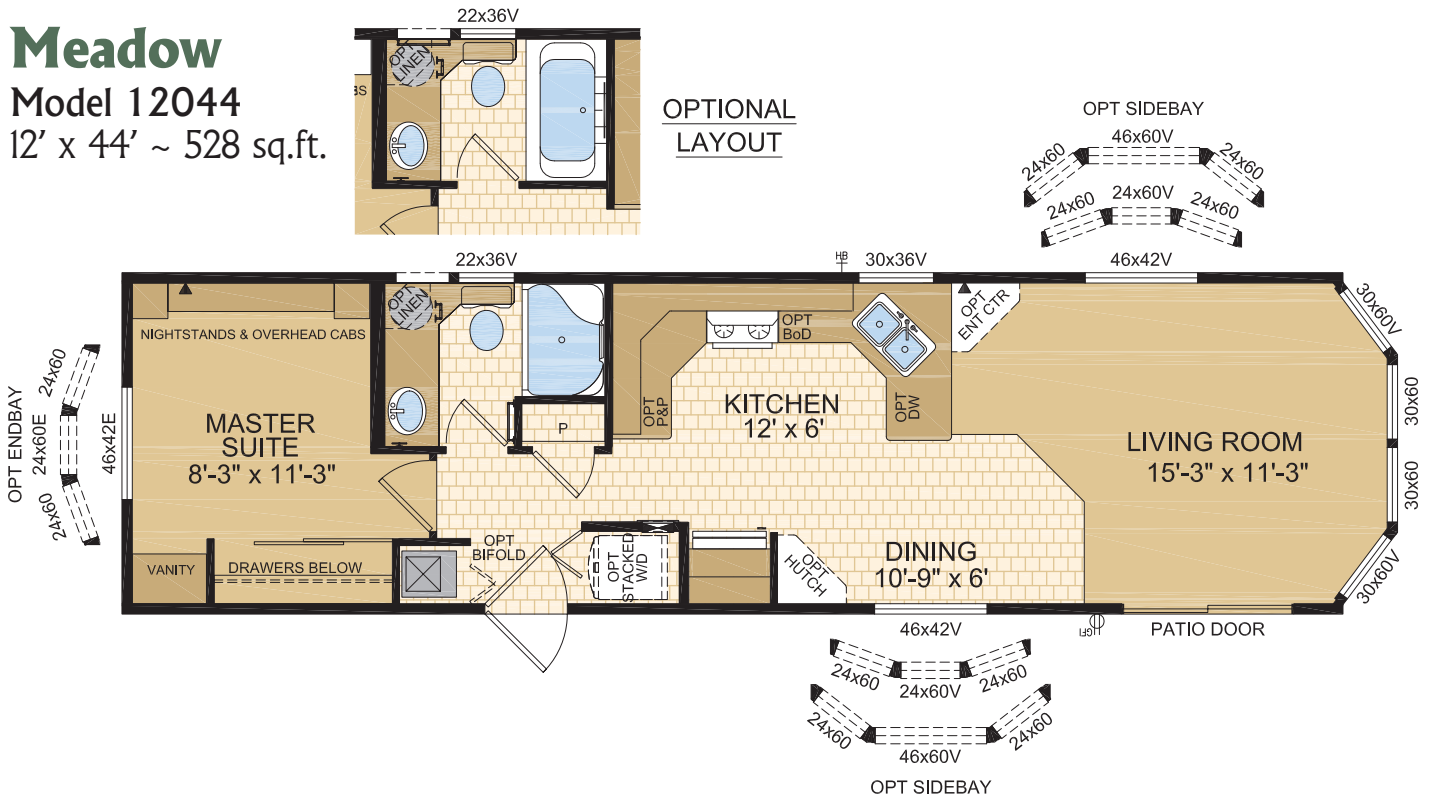
OPTIONAL
LAYOUT



Meadow

Model 12044

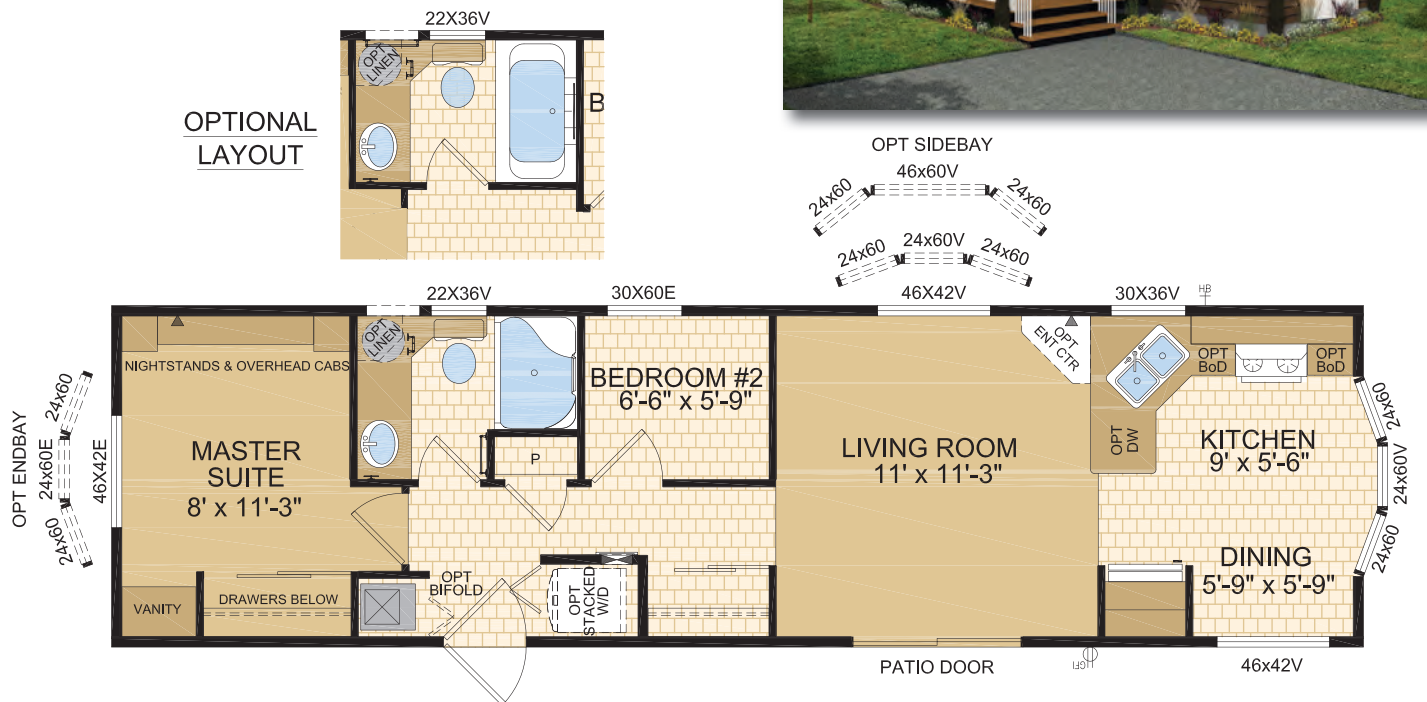
12' x 44' ~ 528 sq.ft.



Simcoe

Model 12045

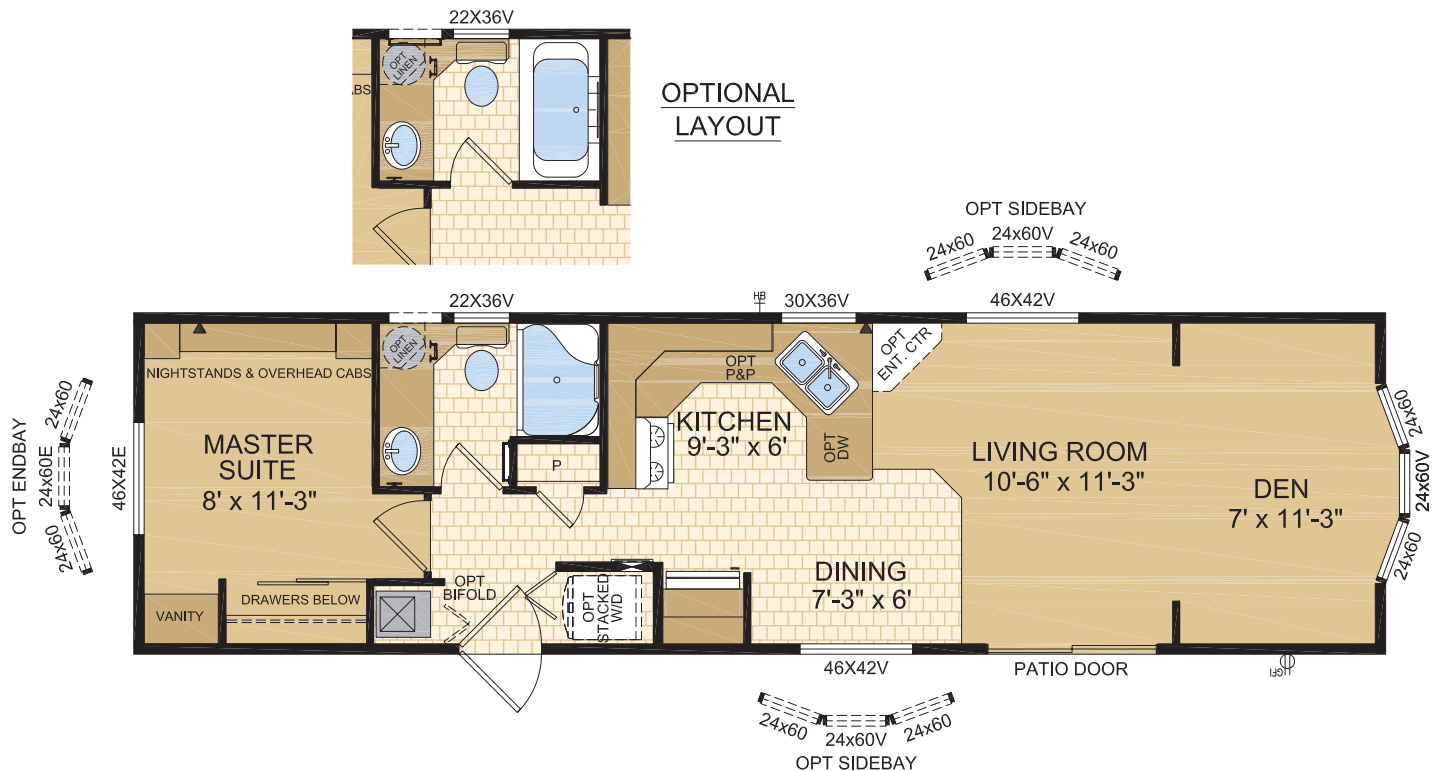
12' x 44' ~ 528 sq.ft.



O'Hara

Model 12144

12' x 44' ~ 528 sq.ft.



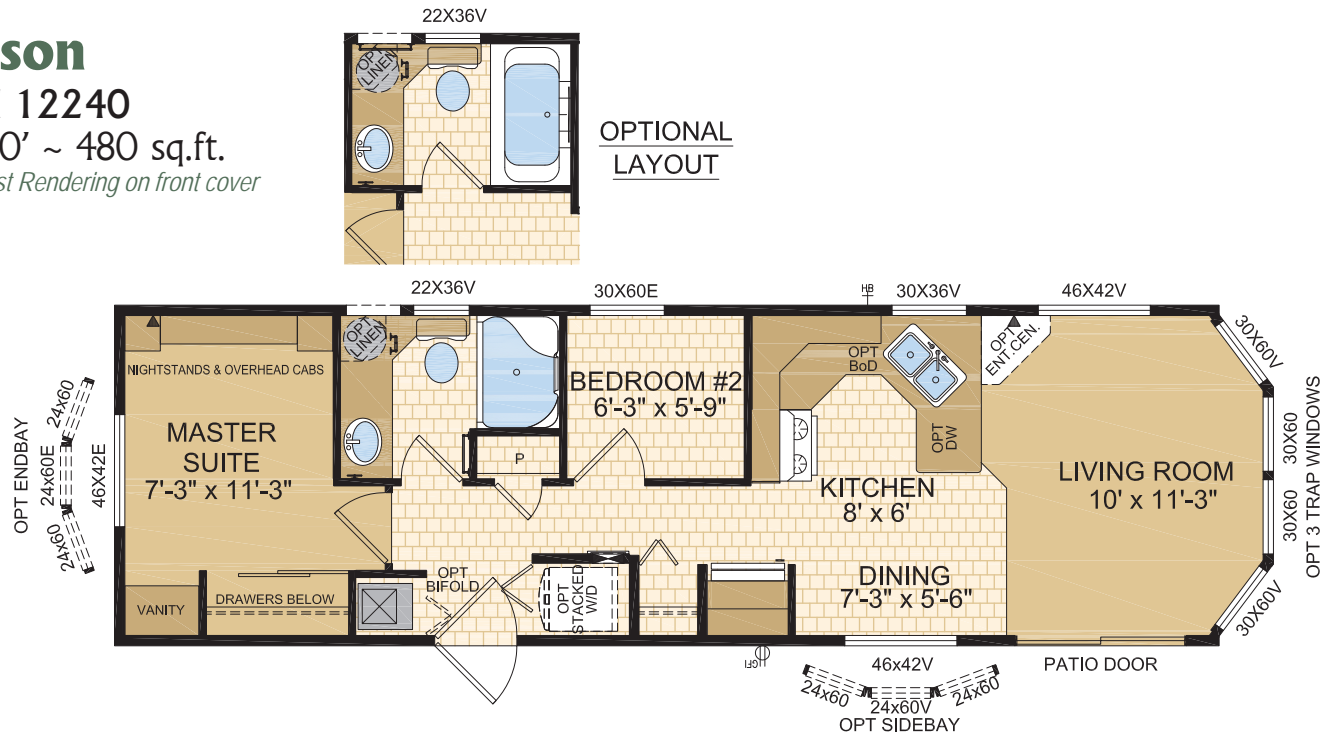
Pacific Park Models

Watson

Model 12240

12' x 40' ~ 480 sq.ft.

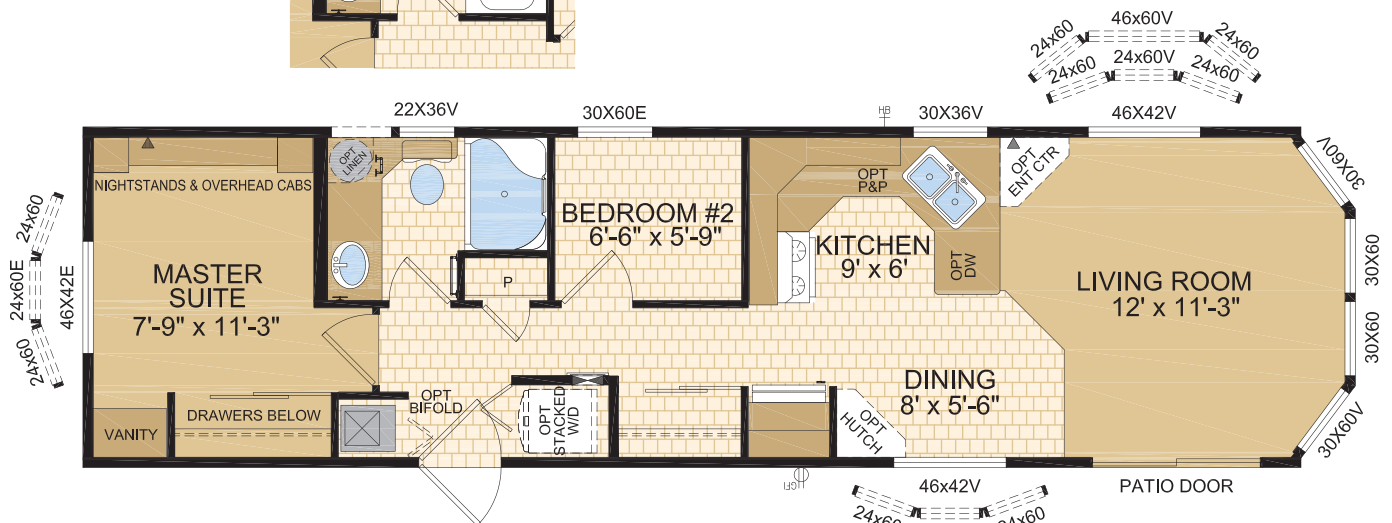
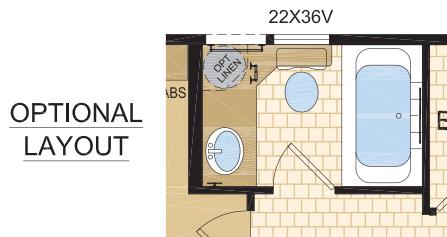
Note: Artist Rendering on front cover



Livingstone

Model 12244

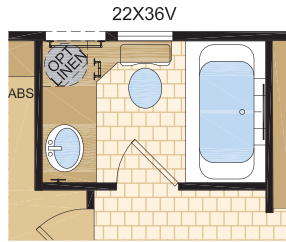
12' x 44' ~ 528 sq.ft.



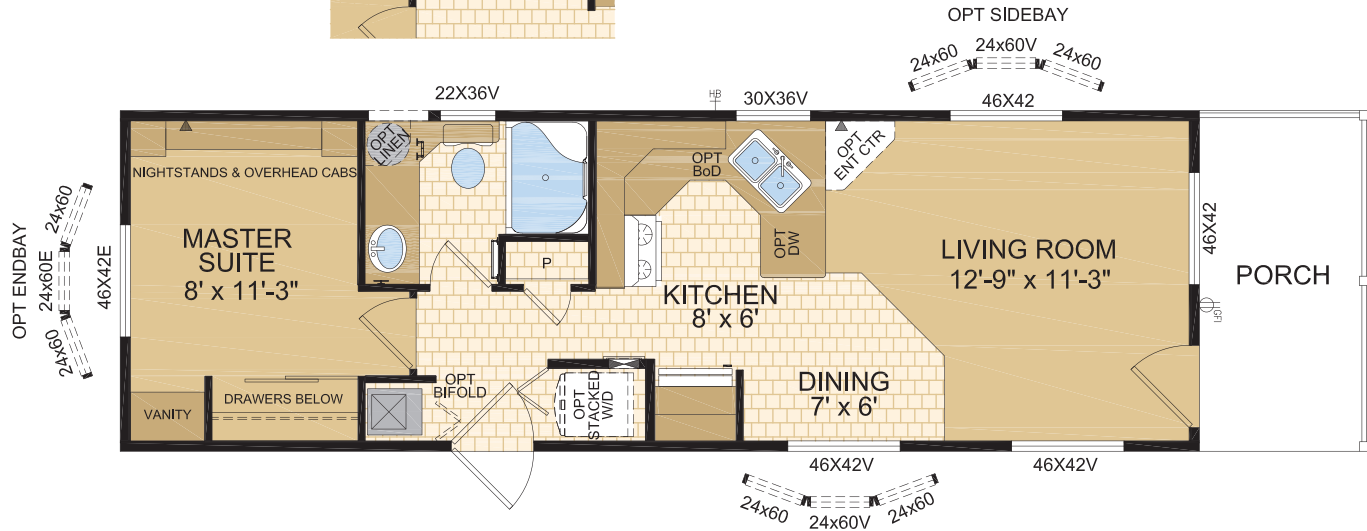
Crawford

Model 12644

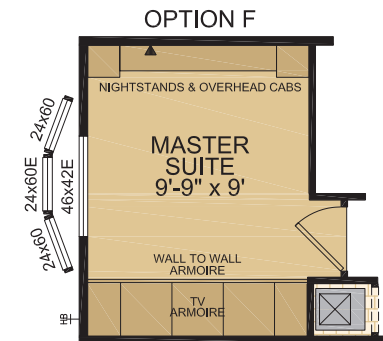
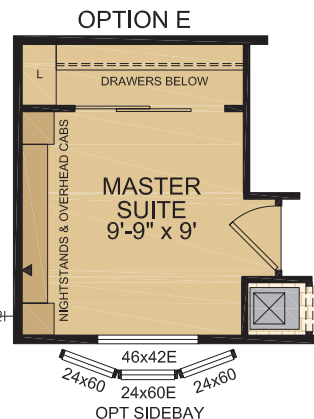
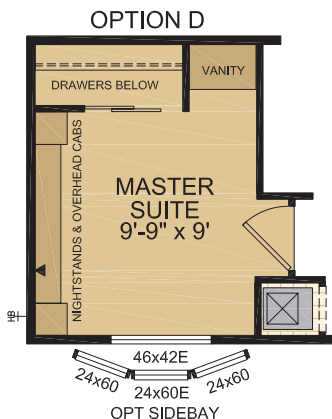
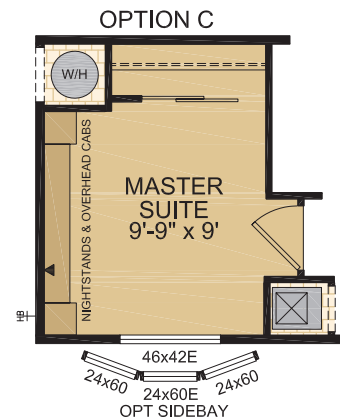
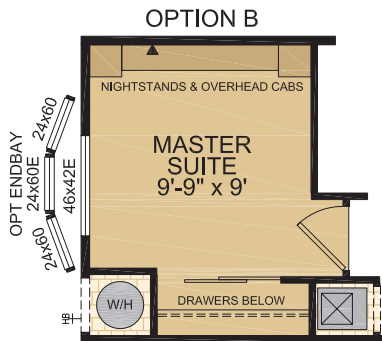
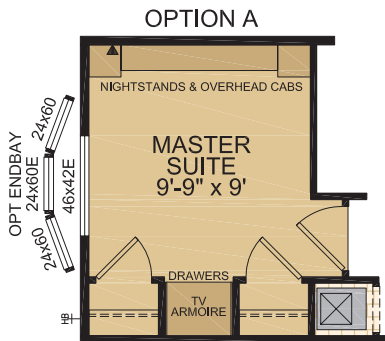
12' x 38' ~ 456 sq.ft.



OPTIONAL
LAYOUT



Optional Master Suite Layouts



STANDARD FEATURES & SPECIFICATIONS

DISTINCTIVE FEATURES

- Built to the Z-241 code
- 8' Ceilings
- Front bay window (most models)
- Cathedral ceiling throughout
- Cathedral cove moulding throughout
- Décora switches and receptacles
- 12" eaves (sides & rear); 18" front eave
- Deluxe bedroom night stands w/ cabinets
- Bedroom vanity (open below) w/mirror & light

GENERAL CONSTRUCTION

- 2" x 6" Floor Joist at 16" o.c. (12' Wides)
- 2" x 8" Floor Joist at 16" o.c. (13' & 14' Wides)
- 8' - 2" x 4" sidewall
- Detachable hitch with Lunette Eye Connection
- Triple axles
- Heavy tubular steel frame
- 6 mil Interior vapour barrier
- Floor decking, 19/32" OSB T & G, glued & screwed
- 3/8" Exterior O.S.B. sheathing
- 7/16" Roof sheathing
- Architectural asphalt shingle roof (limited lifetime warranty)
- 2" x 3" Interior Walls
- Engineered full 7/12 pitch roof trusses (12' Wides) (4/12 Interior)
- Engineered full 5.5/12 pitch roof trusses (13' & 14' Wides) (3.5/12 Interior)
- Maintenance free vinyl lap siding with metal fascia
- Residential maintenance free Low E Argon Filled (R-5) PVC vinyl windows
- Residential vinyl patio door with lock (most models)
- Coach lights at all exterior entrances
- Screen doors at rear exterior door
- Dehumidistat control
- Exterior GFI receptacle
- Exterior frost free tap
- Insulation – Roof R28, Floor R20, Wall R12
- Textured (primed) gyproc ceiling

TASTEFUL INTERIORS

- Quality linoleum flooring throughout
- Coordinating window valance over 2" white faux wood cordless blinds (inset in window) in all areas except bathrooms and trap widows
- Pre-finished interior passage doors in Crystal White colour

BRIGHT, BEAUTIFUL KITCHENS

- Deluxe tile backsplash
- Pantry – select models
- 19 cu ft 2-Door frost free refrigerator
- 30" propane range
- Exterior vented range hood with light
- Double stainless steel sink
- Dowelled full modular cabinetry w/crown moulding
- Three distinctive colors of cabinet doors to choose from with matching moulding & trim colour

SPACIOUS BATHS

- Obscure bath window with decorative valance
- Deluxe tile backsplash
- 4' Shower with seat
- Power bath fan on separate switch
- Mirror & Theatrical lights
- Residential type toilet and sink
- GFI receptacle

UTILITY SERVICES

- Electronic ignition 80% AFUE non-condensing gas furnace
- 30 Gallon electric hot water tank
- 50 Amp electrical service with 25' cord
- Exterior propane line
- GFI protected receptacle for heat tape
- CO2/Smoke detector(s) c/w battery backup
- Two communication outlets (LR & MBR)



Samlan Homes Canada
780-219-5555

